

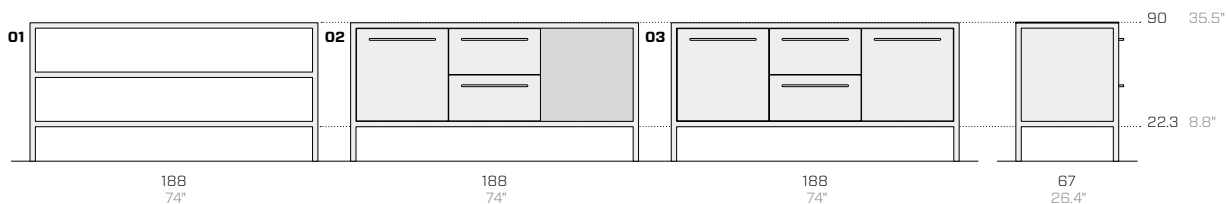
Frame

Kitchens & workbenches

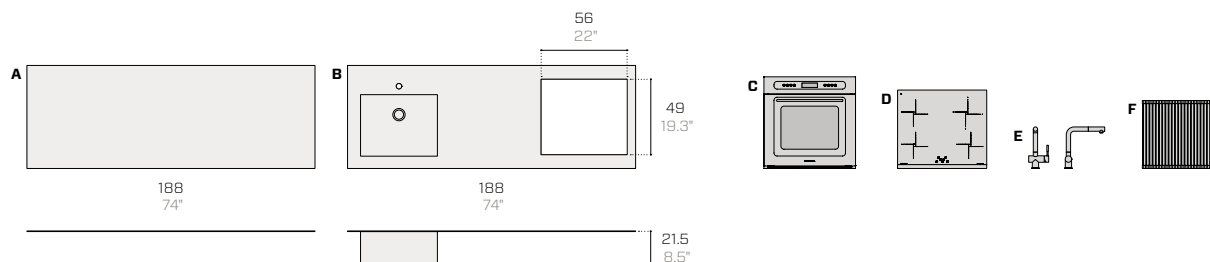
Salvatore Indriolo, 2018



Bases / Basi / Basen



Barazza tops and accessories / Top e accessori Barazza / Barazza Abdeckungen und Zubehör

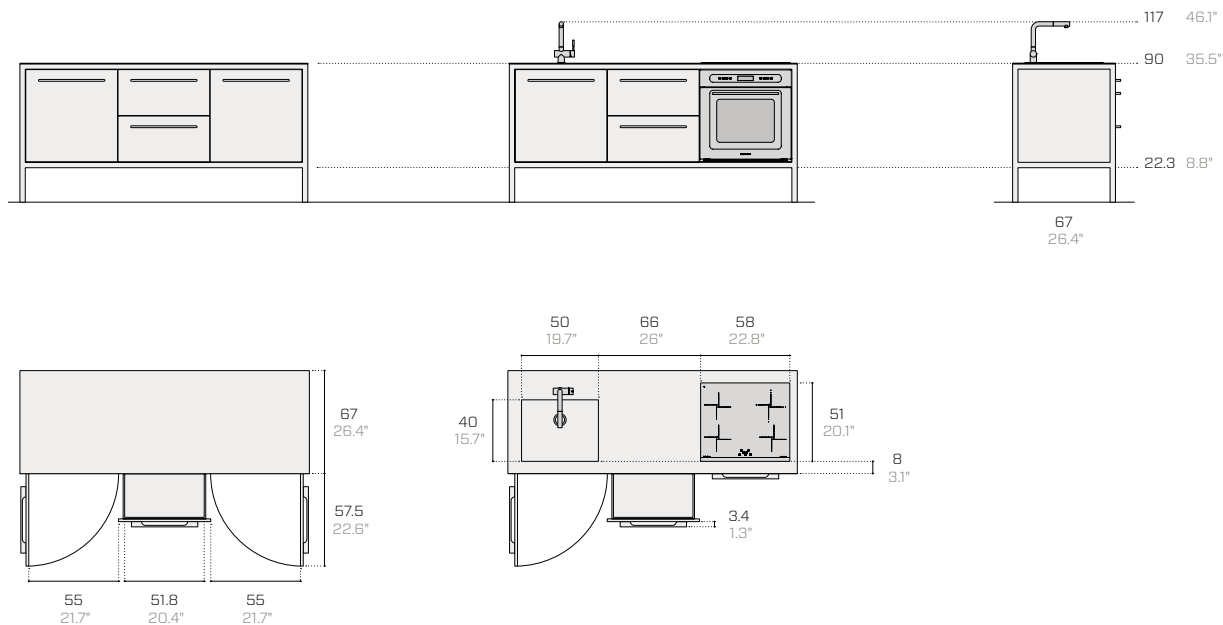


A. 4 mm (0.16") AISI 304 stainless steel top B. 4 mm (0.16") AISI 304 stainless steel top with sink and hole for induction hob C. Oven
 D. Induction hob E. Tap F. Roll-up draining mat.

A. Top inox 4mm B. Top inox 4mm con lavello e foro per piano cottura C. Forno
 D. Piano a induzione E. Rubinetto F. Griglia multiuso avvolgibile.

A. 4 mm (0.16") CNS AISI 304 Abdeckung B. 4 mm (0.16") CNS AISI 304 Abdeckung mit Waschbecken und Ausschnitt für Induktionskochfeld C. Backofen
 D. Induktionskochfeld E. Wasserhahn F. Aufrollbare Abtropfmatte.

Configuration examples / Esempi di configurazione / Konfigurationsbeispiele



Product / Prodotto / Produkt

No.	Code	Dimensions (w-d-h)	Weight	Doors	Drawers
Nr.	Codice	Dimensioni (l-p-h)	Peso	Ante	Cassetti
Nr.	Code	Abmessungen (b-t-h)	Gewicht	Türen	Schubladen
:	:	cm :	kg :	:	:

Packaging / Imballo / Verpackung

Dimensions (w-d-h)	Weight	Vol pkg
Dimensioni (l-p-h)	Peso	Vol. collo
Abmessungen (b-t-h)	Gewicht	Vol. Kollo
cm :	kg :	mc

Bases / Basi / Basen

01	FR81	188 67 90	100	-	-	193 71 120	110	1.70
02	FR82	188 67 90	95	1	2	193 71 120	105	1.70
03	FR83	188 67 90	100	2	2	193 71 120	110	1.70

4 mm (0.16") AISI 304 stainless steel Barazza top / Top inox 4mm Barazza / 4 mm (0.16") CNS AISI 304 Barazza Abdeckung

A	FRB01	188 67 0.4	50	-	-	197 80 21	60	0.40
B	FRB02	188 67 0.4	40	-	-	197 80 21	50	0.40

Barazza oven 1FUNPV / Forno Barazza 1FUNPV / Barazza Backofen 1FUNPV

C	FRB03	60 61 60	35	-	-	64 64 68	39	0.30
----------	-------	----------	----	---	---	----------	----	------

Barazza induction hob 1PIDG64N / Piano a induzione Barazza 1PIDG64N / Barazza Induktionskochfeld 1PIDG64N

D	FRB04	58 51 0.4	12	-	-	87 60 13	14	0.10
----------	-------	-----------	----	---	---	----------	----	------

Barazza Tap 1RUBMSTDV / Rubinetto Barazza 1RUBMSTDV / Barazza Wasserhahn 1RUBMSTDV

E	FRB05	13 26 27	5	-	-	59 25 10	8	0.10
----------	-------	----------	---	---	---	----------	---	------

Barazza roll-up draining mat 1GSPA / Griglia multiuso avvolgibile Barazza 1GSPA / Barazza Aufrollbare Abtropfmatte 1GSPA

F	FRB06	47 45 1	1	-	-	50 8 8	1	0.10
----------	-------	---------	---	---	---	--------	---	------

The packaging details are for products that require assembly / I dati di imballo si riferiscono al prodotto smontato / Die Verpackungsdaten beziehen sich auf das unmontierte Produkt

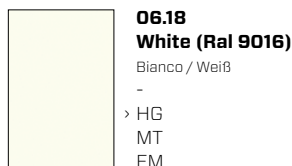
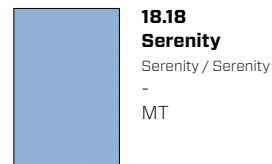
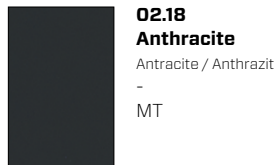
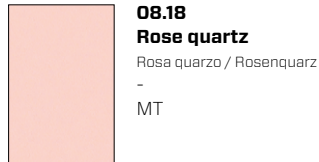
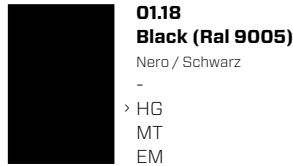


Metal essentials

HG = High Gloss / Lucido / Glänzend

MT = Matt / Opaco / Matt

EM = Embossed / Goffrato / Gaufriert



Metal design

HG = High Gloss / Lucido / Glänzend
 MT = Matt / Opaco / Matt
 EM = Embossed / Goffrato / Gaufriert

Ultra-matt



**31.18
Cocoa**
Cacao / Kakao
-
MT



**32.18
Dove grey**
Tortora / Taubengrau
-
MT



**33.18
Hemp**
Canapa / Hanf
-
MT



**34.18
Smoke**
Fumo / Rauchen
-
MT



**35.18
Night**
Notte / Nacht
-
MT

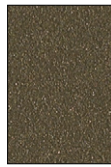
Metallic



**41.18
Gold**
Oro / Gold
-
EM



**42.18
Copper**
Rame / Kupfer
-
EM



**43.18
Bronze**
Bronzo / Bronze
-
EM

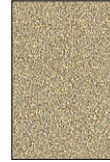


**44.18
Iron**
Ferro / Eisen
-
EM

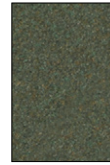


**45.18
Verdigris**
Verderame / Grünspan
-
EM

Earth



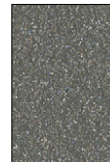
**51.18
Sand**
Sabbia / Sand
-
EM



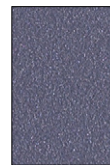
**52.18
Moss**
Muschio / Moos
-
EM



**53.18
Basalt**
Basalto / Basalt
-
EM

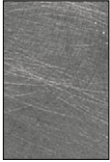


**54.18
Stone**
Pietra / Stein
-
EM



**55.18
Amethyst**
Ametista / Amethyst
-
EM

AISI 304 stainless steel /
Acciaio Inox AISI 304 / CNS AISI 304



K1.18
Inox
Inox / Inox

Technical information

Metal Non-toxic powder coating for interior use, with no heavy metals. Cured in an oven at 190°C, following degreasing and phosphating. Guaranteed minimum thickness of 50 microns. Minimum resistance to salt spray of 200 hours (in accordance with the ASTM B117 standard). Not suitable for direct contact with food as envisaged in Italian Ministerial Decree 21/03/73. Before the coating is added, it is possible to assess whether to give the products a special treatment to make them more resistant to wear and exposure to the elements. There is a surcharge for this treatment. Requests for other RAL finishes can be considered.

AISI 304 stainless steel Kitchen top with a thickness of 4 mm (0.16") and a Vintage finish (with exclusive Barazza manual processing, making it quicker and easier to maintain).

Informazioni tecniche

Metallo Verniciatura per interni a polveri atossiche prive di metalli pesanti, con passaggio in forno a 190 °C, previo trattamento di sgrassaggio e fosfatazione. Spessore minimo garantito 50 micron, resistenza minima in nebbia salina pari a 200 ore (norma ASTM B117). Non idonea al contatto diretto con gli alimenti come previsto dal decreto italiano D.M. 21/03/73. Prima della verniciatura, è possibile valutare l'applicazione di un trattamento al fine di rendere i prodotti più resistenti all'uso e all'esposizione agli agenti atmosferici. Per tale trattamento è prevista una maggiorazione di prezzo. Altre finiture RAL valutabili su richiesta.

Acciaio Inox AISI 304 Piano cucina spessore 4 mm (0.16") con finitura Vintage (lavorazione manuale esclusiva Barazza, la cui manutenzione è più semplice e agevole).

Technische Informationen

Metall Die Lackierung der gift- und schwermetallfreien Pulverlacke für Innenbereiche erfolgt im Lackierofen bei 190 °C nach vorheriger Entfettung und Phosphatierung. Die garantierte Mindeststärke der Lack-schicht beträgt 50 Mikron bei einer Mindestprüfungsdauer von 200 Stunden im Salznebel (ASTM-Norm B117). Nicht für den direkten Kontakt mit Nahrungsmitteln geeignet, gemäß Ministerialdekret vom 21.03.1973 i.d.g.F. Vor der Lackierung kann die Anwendung einer Behandlung abgewägt werden, um die Produkte für den Gebrauch und gegen Witterungseinflüsse widerstandsfähiger zu machen. Für diese Behandlung ist ein Preisaufschlag vorgesehen. Auf Anfrage können andere RAL-Finishes in Betracht gezogen werden.

CNS AISI 304 Küchenarbeitsplatte Stärke 4 mm (0.16") mit Vintage-Finish (exklusive Handverarbeitung Barazza, die leicht und bequem zu pflegen ist).

Kitchens and workbenches from the Frame range, with a visible support structure and inset doors and drawers that are distinguishing visual features of the minimal design scheme.

Frame made of 35 x 35 mm (1.38" x 1.38") square tubes. Concealed adjustable feet.

Top made of AISI 304 stainless steel with a thickness of 4 mm (0.16") and a Vintage finish (with exclusive Barazza manual processing). Either with no accessories or with an integrated 500 x 400 x 219 mm (19.69" x 15.75" x 8.62") sink, a steel tap with a Vintage finish (1RUBMSTDV) and a Barazza induction hob (1PIDG64N).

Lower surfaces (only for workbenches) made of metal with a thickness of 3 mm (0.19") and a bottom fibreboard filler panel.

Doors inset in the frame, made of bent and filled sheet metal. Door thickness: 20 mm (0.79"). Metal handles with a coating in a colour to match the doors. Soft-close dampening hinges.

Drawers with fronts inset in the frame, made of bent and filled sheet metal. Drawer front thickness: 20 mm (0.79"). Metal handles with a coating in a colour to match the drawer fronts. Drawers with built-in stabilization and soft-close systems. Capacity: 40 kg (88.18 lb).

Sides and bases inset in the frame, made of bent and filled sheet metal.

Metal backboards inset in the frame.

inside shelves made of bent sheet metal.

Optional oven Barazza Unique Multi-program Touch Control model, width: 60 cm (1FUNPV).

This product requires assembly (it comes with welded single-piece frames).

Cucine e banconi del programma Frame, caratterizzato dal telaio portante in vista ed ante e cassetti in luce, che diventano caratteristiche estetiche dal design minimale.

Telaio in tubolare quadrato 35 x 35 mm (1.38" x 1.38"). Piedini invisibili regolabili.

Top in acciaio Inox AISI 304 di spessore 4 mm (0.16") con finitura Vintage (lavorazione manuale esclusiva Barazza). Disponibile senza accessori o con vasca integrata 500 x 400 x 219 mm (19.69" x 15.75" x 8.62"), rubinetto in acciaio finitura Vintage (1RUBMSTDV) e piano cottura ad induzione Barazza (1PIDG64N).

Piani inferiori (solo per i banconi) in metallo di spessore 3 mm (0.19") con tamponamento inferiore in fibre di legno.

Ante in luce al telaio, in lamiera piegata e tamponata. Spessore delle ante 20 mm (0.79"). Maniglie in metallo verniciate in tinta con le ante. Cerniere ammortizzate.

Cassetti con frontali in luce al telaio spessore 20 mm (0.79"), in lamiera piegata e tamponata. Maniglie in metallo verniciate in tinta con i frontali dei cassetti. Cassetti con sistemi di stabilizzazione e soft-close integrati con portata 40 kg (88.18 lb).

Fianchi e fondi in luce al telaio, in lamiera piegata e tamponata.

Schiene in metallo in luce al telaio.

Ripiani interni in lamiera piegata.

Forno opzionale Barazza modello Unique Multiprogram Touch Control da 60 cm di larghezza (1FUNPV).

Il prodotto viene fornito smontato (telaio monoblocco saldati).

Küchen und Werkbänke aus der Frame-Linie mit sichtbarem Tragegestell und bündigen Türen und Schubladen, die zu den ästhetischen Eigenschaften eines Minimaldesigns werden.

Gestell aus Vierkantrohr 35 x 35 mm (1.38" x 1.38"). Unsichtbare, einstellbare Füße.

Abdeckung aus CNS AISI 304, mit einer Stärke von 4 mm (0.16") mit Vintage-Finish (exklusive Handverarbeitung Barazza) ohne Zubehör oder mit integriertem Waschbecken 500 x 400 x 219 mm (19.69" x 15.75" x 8.62"), Wasserhahn aus Stahl Vintage-Finish (1RUBMSTDV) und Induktionskochfeld Barazza (1PIDG64N).

Fachböden (nur für Werkbänke) aus 3 mm (0.19") starkem Metall mit unterer Holzfaserdämmung.

Türen aus gedämmtem Falzblech, bündig mit dem Gestell. Stärke der Türen 20 mm (0.79"). Lackierte Metallgriffe gleichfarbig mit den Türen. Gedämpfte Scharniere.

Schubladen aus gedämmtem Falzblech, mit Fronten bündig mit dem Gestell. Schubladenfrontstärke: 20 mm (0.79"). Lackierte Metallgriffe gleichfarbig mit den Schubladenfronten. Schubladen mit Stabilisations- und Soft-Close-Systemen und mit einer Tragfähigkeit von 40 kg (88.18 lb).

Seiten und Basen aus gedämmtem Falzblech, bündig mit dem Gestell.

Rückwände aus Metall, bündig mit dem Gestell.

Innere Einlegeböden aus Falzblech.

Optionaler Backofen Barazza Modell Unique Multi-Programm, Touch Control, Breite 60 cm (1FUNPV).

Das Produkt wird unmontiert geliefert (geschweißte einteilige Gestelle).

Disclaimer / Esclusione di responsabilità / Haftungsausschluss

Fantin Srl reserves the right to change the dimensions and features of the products contained in this technical data sheet at any time and without prior notice. The finishes illustrated are purely indicative as the accuracy tolerances of printing processes should be taken into account.

Fantin Srl si riserva la facoltà di modificare in qualsiasi momento e senza preavviso le dimensioni e l'esecuzione dei prodotti contenuti nella presente scheda tecnica. Le finiture riportate hanno valore indicativo in quanto soggette alle tolleranze dei processi di stampa.

Fantin Srl behält sich das Recht vor, die angegebenen Maße und Ausführungen der Produkte, welche dieses Produktblatt enthält, jederzeit ohne Vorankündigung zu ändern. Aufgrund drucktechnischer Abweichungen dienen die dargestellten Ausführungen nur der Illustration.

Fantin Srl

via San Vito, 43
33080 - Bannia
di Fiume Veneto (PN)
Italia

t +39 0434 959 133
f +39 0434 560 037
fantin@fantin.com
www.fantin.com



UNI EN ISO 9001