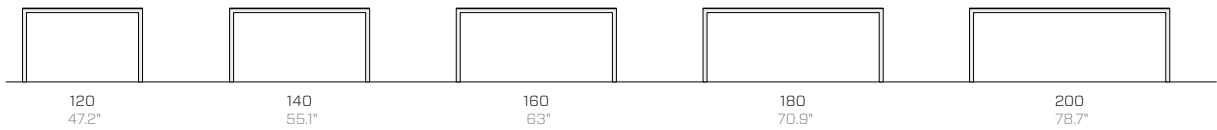
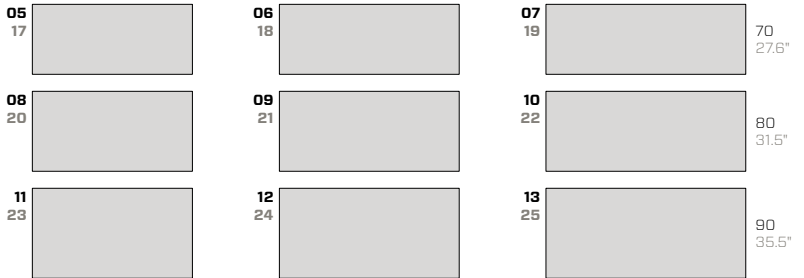
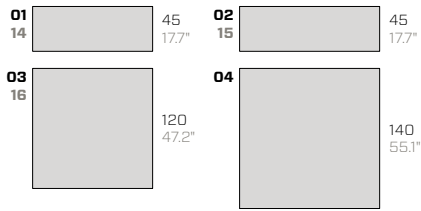


Frame

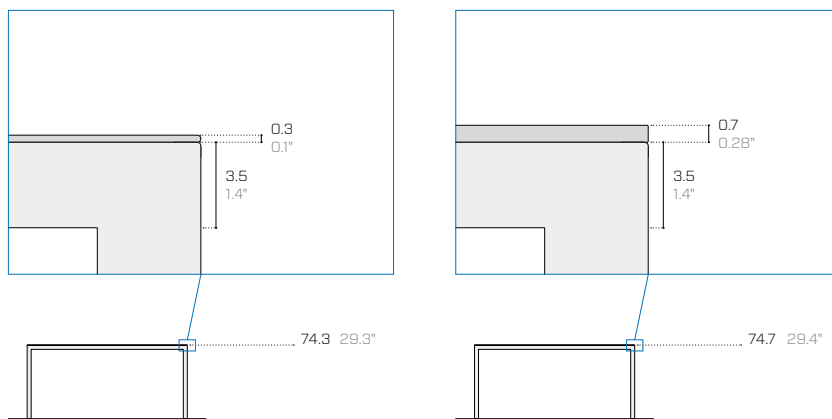
Tables & desks

Salvatore Indriolo, 2018





Top thickness / Spessore dei piani / Plattenstärke

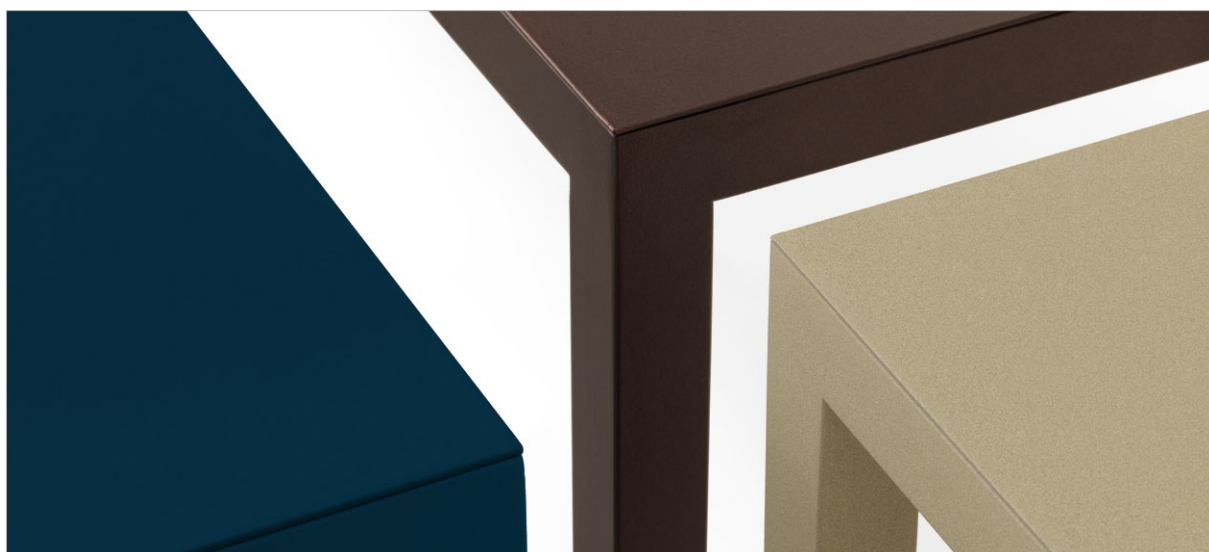


With metal top
 Con piano in metallo
 Mit Abdeckung aus Metall

With Fenix top
 Con piano in Fenix
 Mit Abdeckung aus Fenix

Product / Prodotto / Produkt					Packaging / Imballo / Verpackung					
No.	Code	Dimensions (w-d-h)			Weight	Dimensions (w-d-h)			Weight	Vol pkg
Nr.	Codice	Dimensioni (l-p-h)			Peso	Dimensioni (l-p-h)			Peso	Vol. collo
Nr.	Code	Abmessungen (b-t-h)			Gewicht	Abmessungen (b-t-h)			Gewicht	Vol. Kollo
					cm	kg	cm	kg	mc	
With metal top / Con piano in metallo / Mit Arbeitsplatte aus Metal										
01	FR31	120	45	74.3	21	128	79	20	26	0.20
02	FR33	140	45	74.3	24	148	79	20	29	0.23
03	FR32	120	120	74.3	39	128	124	20	44	0.32
04	FR34	140	140	74.3	50	148	144	20	55	0.43
05	FR35	160	70	74.3	35	168	79	20	40	0.27
06	FR36	180	70	74.3	38	188	79	20	43	0.30
07	FR37	200	70	74.3	42	208	79	20	47	0.33
08	FR38	160	80	74.3	38	168	84	20	43	0.28
09	FR39	180	80	74.3	42	188	84	20	47	0.32
10	FR40	200	80	74.3	45	208	84	20	50	0.35
11	FR41	160	90	74.3	41	168	94	20	46	0.32
12	FR42	180	90	74.3	45	188	94	20	50	0.35
13	FR43	200	90	74.3	49	208	94	20	54	0.39
With Fenix top / Con piano in Fenix / Mit Arbeitsplatte aus Fenix										
14	FR31FN	120	45	74.7	21	128	79	20	26	0.20
15	FR33FN	140	45	74.7	24	148	79	20	29	0.23
16	FR32FN	120	120	74.7	39	128	124	20	44	0.32
17	FR35FN	160	70	74.7	35	168	79	20	40	0.27
18	FR36FN	180	70	74.7	38	188	79	20	43	0.30
19	FR37FN	200	70	74.7	42	208	79	20	47	0.33
20	FR38FN	160	80	74.7	38	168	84	20	43	0.28
21	FR39FN	180	80	74.7	42	188	84	20	47	0.32
22	FR40FN	200	80	74.7	45	208	84	20	50	0.35
23	FR41FN	160	90	74.7	41	168	94	20	46	0.32
24	FR42FN	180	90	74.7	45	188	94	20	50	0.35
25	FR43FN	200	90	74.7	49	208	94	20	54	0.39

The packaging details are for products that require assembly / I dati di imballo si riferiscono al prodotto smontato / Die Verpackungsdaten beziehen sich auf das unmontierte Produkt



Metal essentials

UM = Ultra matt / Ultra opaco / Ultra matt

MT = Matt / Opaco / Matt

EM = Embossed / Goffrato / Gaufriert

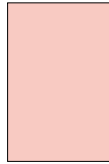
**01.18
Black (RAL 9005)**

Nero / Schwarz

-

MT

EM

**08.18
Rose quartz**

Rosa quarzo / Rosenquarz

-

MT

**15.19
Forest green (RAL 6007)**

Verde bosco / Waldgrün

-

EM

**02.18
Anthracite (RAL 7021)**

Antracite / Anthrazit

-

MT

EM

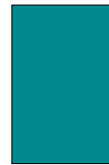
**09.18
Ruby red (RAL 3003)**

Rosso rubino / Rubinrot

-

MT

EM

**16.19
Turquoise blue (RAL 5018)**

Blu turchese / Türkisblau

-

EM

**03.18
Fantin grey**

Grigio Fantin / Fantin-Grau

-

EM

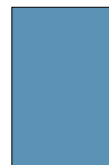
**10.18
Traffic red (RAL 3020)**

Rosso traffico / Verkehrsrot

-

MT

EM

**17.18
Pastel blue (RAL 5024)**

Blu pastello / Pastellblau

-

MT

EM

**04.18
Light grey (RAL 7035)**

Grigio luce / Lichtgrau

-

MT

EM

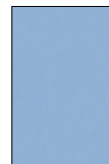
**11.18
Pure orange (RAL 2004)**

Arancio puro / Reinorange

-

MT

EM

**18.18
Serenity**

Serenity / Serenity

-

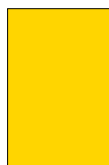
MT

**05.18
Cloud grey**

Grigio nuvola / Wolkengrau

-

EM

**12.19
Zinc yellow (RAL 1018)**

Giallo zinco / Zinco gelb

-

EM

**19.18
Gentian blue (RAL 5010)**

Blu genziana / Enzianblau

-

MT

EM

**06.18
White (RAL 9016)**

Bianco / Weiß

-

MT

EM

**13.19
Mint green (RAL 6024)**

Verde menta / Minzgrün

-

EM

**20.19
Steel blue (RAL 5011)**

Blu acciaio / Stahlblau

-

EM

**07.18
Pearl white (RAL 1013)**

Bianco perla / Perlweiß

-

MT

EM

**14.18
Sage green (RAL 6021)**

Verde salvia / Salbeigrün

-

MT

EM

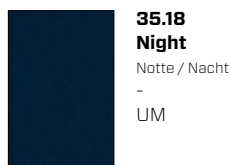
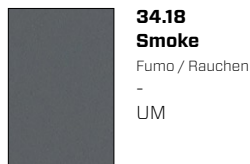
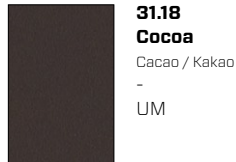
Metal design*

UM = Ultra matt / Ultra opaco / Ultra matt

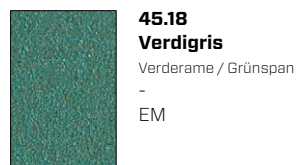
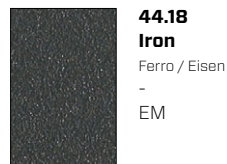
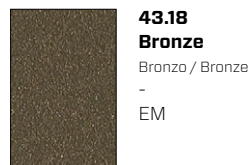
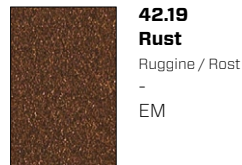
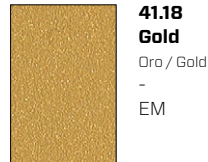
MT = Matt / Opaco / Matt

EM = Embossed / Goffrato / Gaufriert

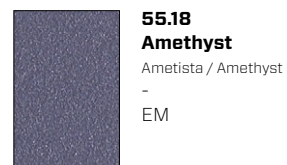
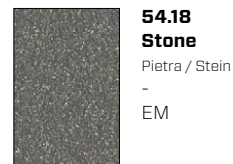
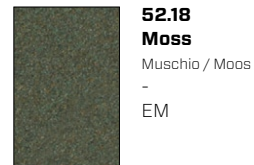
Ultra-matt*



Metallic*



Earth*



Instructions for use / Indicazioni d'uso / Anwendungshinweise

Finishes
Finiture
Finishes

For tops
Per i top
Für die Abdeckungen

For outdoor use
Per esterni
Für den Außenbereich

UM = Ultra matt / Ultra opaco / Ultra matt
MT = Matt / Opaco / Matt
EM = Embossed / Goffrato / Gaufriert

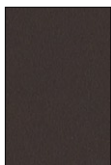
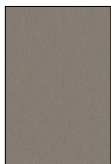
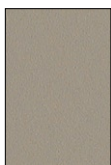
-
-
+

-
+
+

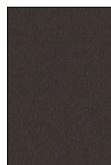
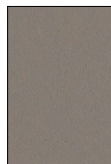
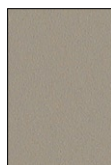
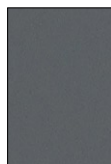
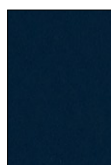
Fenix NTM™

Fenix NTM™ - Ultra-matt pairing
Corrispondenza Fenix NTM™ - Ultra-matt
Entsprechung Fenix NTM™ - Ultra-matt

F1.19
Nero Ingo

F2.19
Bianco Kos

F3.19
Cacao Orinoco

F4.19
Grigio Londra

F5.19
Beige Arizona

F6.19
Grigio Bromo

F7.19
Blu Fes

31.18
Cocoa
 Cacao / Kakao
 -
 UM

32.18
Dove grey
 Tortora / Taubengrau
 -
 UM

33.18
Hemp
 Canapa / Hanf
 -
 UM

34.18
Smoke
 Fumo / Rauchen
 -
 UM

35.18
Night
 Notte / Nacht
 -
 UM

The five "ultra-matt" finishes of the Fantin "Metal Design" collection are a perfect match for many Fenix NTM™ finishes in terms of colour, opacity and softness to the touch. This allows for monochrome products using Fantin solid metal structures and Fenix NTM™ resistant and restorable tops.

Le 5 finiture Ultra-matt della collezione Fantin "Metal Design" sono esattamente corrispondenti ad altrettante finiture Fenix NTM™, per colore, opacità e morbidezza al tatto. È così possibile ottenere prodotti monocromatici dalle solide strutture in metallo Fantin e con top resistenti e ripristinabili in Fenix NTM™.

Die fünf möglichen Oberflächen der Fantin Kollektion „Metal Design“ sind in harmonischer Abstimmung in Farb und Oberflächenempfindung mit den passenden Fenix NTM™ Oberflächen der Arbeitsplatte. So ist es möglich eine monolithische, unifarbene Gesamterscheinung der Fantin Strukturen mit dem widerstandsfähigen Arbeitsplattenoberflächen von Fenix NTM™ zu erzielen. Diese Arbeitsplatten wären im Bedarfsfall auch austauschbar.

Technical information

Metal Non-toxic powder coating for interior use, with no heavy metals. Cured in an oven at 190°C, following degreasing and phosphating. Guaranteed minimum thickness of 50 microns. Minimum resistance to salt spray of 200 hours (in accordance with the ASTM B117 standard). Not suitable for direct contact with food as envisaged in Italian Ministerial Decree 21/03/73. Before the coating is added, it is possible to assess whether to give the products a special treatment to make them more resistant to wear and exposure to the elements. There is a surcharge for this treatment. Requests for other RAL finishes can be considered.

Fenix Top and stove tops in 7 mm (0.28") Fenix NTM™ thermolaminat with bottom fibreboard filler panel. Super matt, smudge-proof and restorable, gives the surface a warm aesthetic and is soft to the touch. Fenix NTM™ finishes are paired with the Fantin Ultra-matt (Metal Design) collection in the price list, in order to create monochrome products.

Informazioni tecniche

Metallo Verniciatura per interni a polveri atossiche prive di metalli pesanti, con passaggio in forno a 190 °C, previo trattamento di sgrassaggio e fosfatazione. Spessore minimo garantito 50 micron, resistenza minima in nebbia salina pari a 200 ore (norma ASTM B117). Non idonea al contatto diretto con gli alimenti come previsto dal decreto italiano D.M. 21/03/73. Prima della verniciatura, è possibile valutare l'applicazione di un trattamento al fine di rendere i prodotti più resistenti all'uso e all'esposizione agli agenti atmosferici. Per tale trattamento è prevista una maggiorazione di prezzo. Altre finiture RAL valutabili su richiesta.

Fenix Top e piani cucina in termolaminato Fenix NTM™ di spessore 7 mm (0.28") con tamponamento inferiore in fibre di legno. Super opaco, antimpronta e ripristinabile, dona alla superficie un'estetica calda e morbida al tatto. Le finiture Fenix NTM™ a listino sono corrispondenti alla collezione Fantin Ultra-matt (Metal Design), al fine di creare prodotti monocromatici.

Technische Informationen

Metall Die Lackierung der gift- und schwermetallfreien Pulverlacke für Innenbereiche erfolgt im Lackierofen bei 190 °C nach vorheriger Entfettung und Phosphatierung. Die garantierte Mindeststärke der Lack-schicht beträgt 50 Mikron bei einer Mindestprüfungsdauer von 200 Stunden im Salznebel (ASTM-Norm B117). Nicht für den direkten Kontakt mit Nahrungsmitteln geeignet, gemäß Ministerialdekret vom 21.03.1973 i.d.g.F. Vor der Lackierung kann die Anwendung einer Behandlung abgewägt werden, um die Produkte für den Gebrauch und gegen Witterungseinflüsse widerstandsfähiger zu machen. Für diese Behandlung ist ein Preisaufschlag vorgesehen. Auf Anfrage können andere RAL-Finishes in Betracht gezogen werden.

Fenix Abdeckung und Küchenarbeitsplatten aus Thermolaminat Fenix NTM™ in der Stärke 7 mm (0.28") mit unterer Holzfaserdämmung. Die superopake Oberfläche mit Anti-Fingerprint-Schutz ist wiederherstellbar, hat eine warme Optik und eine weiche Haptik. Die Finishes Fenix NTM™ der Liste entsprechen denen der Kollektion Fantin Ultra-matt (Metal Design), sodass unifarbene Produkte entstehen.

Tables and desks from the Frame range, with square tube support structures and extremely thin tops that are distinguishing visual features of the minimal design scheme.

Frame made of 35 x 35 mm (1.38" x 1.38") square tubes. Concealed adjustable feet.

Top made of metal with a thickness of 3 mm (0.12") and a bottom fibreboard filler panel or made of Fenix with a thickness of 7 mm (0.28") and a bottom fibreboard filler panel.

This product requires assembly (assembled products are only provided on request). Only desks 01, 02, 14 and 15 are ready assembled (with welded single-piece frames).

Tavoli e scrittoi del programma Frame, caratterizzato dal telaio portante in tubo quadro e il piano sottilissimo, che diventano caratteristiche estetiche dal design minimale.

Telaio in tubolare quadrato 35 x 35 mm (1.38" x 1.38"). Piedini invisibili regolabili.

Top in metallo di spessore 3 mm (0.12") con tamponamento inferiore in fibre di legno o in Fenix di spessore 7 mm (0.28") con tamponamento inferiore in fibre di legno.

Il prodotto viene fornito smontato (montato solo su richiesta) ad eccezione degli scrittoi 01, 02, 14 e 15 che vengono forniti montati (telai monoblocco saldati).

Tische und Schreibtische der Frame-Linie mit Tragegestell aus Vierkantrohr und sehr dünner Platte, die zu den ästhetischen Eigenschaften eines Minimaldesigns werden.

Gestell aus Vierkantrohr 35 x 35 mm (1.38" x 1.38"). Unsichtbare, einstellbare Füße.

Abdeckung aus 3 mm (0.12") starkem Metall mit unterer Holzfaserdämmung oder aus 7 mm (0.28") starkem Fenix mit unterer Holzfaserdämmung.

Das Produkt wird unmontiert geliefert (montiert nur auf Anfrage) mit Ausnahme der Schreibtische 01, 02, 14 und 15, die montiert geliefert werden (geschweißte einteilige Gestelle).

Disclaimer / Esclusione di responsabilità / Haftungsausschluss

Fantin Srl reserves the right to change the dimensions and features of the products contained in this technical data sheet at any time and without prior notice. The finishes illustrated are purely indicative as the accuracy tolerances of printing processes should be taken into account.

Fantin Srl si riserva la facoltà di modificare in qualsiasi momento e senza preavviso le dimensioni e l'esecuzione dei prodotti contenuti nella presente scheda tecnica. Le finiture riportate hanno valore indicativo in quanto soggette alle tolleranze dei processi di stampa.

Fantin Srl behält sich das Recht vor, die angegebenen Maße und Ausführungen der Produkte, welche dieses Produktblatt enthält, jederzeit ohne Vorankündigung zu ändern. Aufgrund drucktechnischer Abweichungen dienen die dargestellten Ausführungen nur der Illustration.

Fantin Srl

via San Vito, 43
33080 - Bannia
di Fiume Veneto (PN)
Italia

t +39 0434 959 133
f +39 0434 560 037
fantin@fantin.com
www.fantin.com



UNI EN ISO 9001