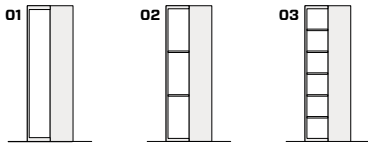


# Just

Salvatore Indriolo, 2016

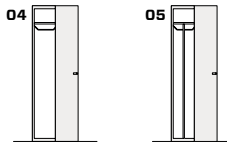


**Just One Push Pull**



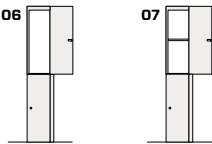
Internal compartment  
Vano interno  
Innenfach  
34.6 x 33.1 x 170 cm  
13.6" x 13" x 66.9"

**Just One Key**



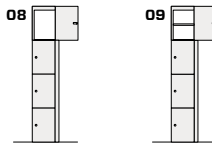
Internal compartment  
Vano interno  
Innenfach  
34.6 x 33.1 x 170 cm  
13.6" x 13" x 66.9"

**Just Two**



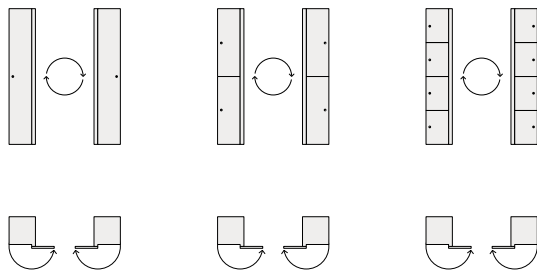
Internal compartment  
Vano interno  
Innenfach  
34.6 x 33.1 x 84 cm  
13.6" x 13" x 33.1"

**Just Four**



Internal compartment  
Vano interno  
Innenfach  
34.6 x 33.1 x 39-43 cm  
13.6" x 13" x 15.4"-16.9"

**Reversible / Reversibilità / Umkehrbarkeit**

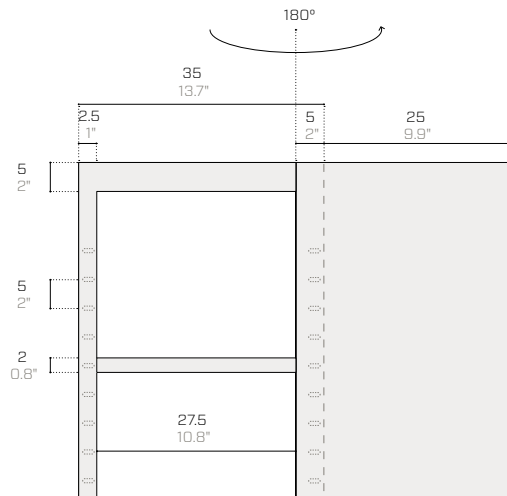


The reversibility is a particular feature of all Just-models.

La reversibilità è prerogativa di tutti i modelli Just.

Die Umkehrbarkeit ist ein besonderes Merkmal aller Just-Modelle.

**Internal compartment / Vano interno / Innenmaße des Innenfachs**



## Product / Prodotto / Produkt

## Packaging / Imballo / Verpackung

No.	Code	Dimensions (w-d-h)	Weight	Compts.	Dimensions (w-d-h)	Weight	Vol pkg
N.	Codice	Dimensioni (l-p-h)	Peso	Vani	Dimensioni (l-p-h)	Peso	Vol. collo
Nr.	Code	Abmessungen (b-t-h)	Gewicht	Fächer	Abmessungen (b-t-h)	Gewicht	Vol. Kollo
		cm	kg		cm	kg	mc

## Just One Push Pull

01	FJ0101	35 39 180	37	1	60 60 196	44	0.71
02	FJ0102	35 39 180	39	1	60 60 196	46	0.71
03	FJ0103	35 39 180	42	1	60 60 196	49	0.71

## Just One Key

04	FJ0104	35 39 180	39	1	60 60 196	46	0.71
05	FJ0105	35 39 180	41	1	60 60 196	48	0.71

## Just Two

06	FJ0206	35 39 180	38	2	60 60 196	45	0.71
07	FJ0207	35 39 180	40	2	60 60 196	47	0.71

## Just Four

08	FJ0408	35 39 180	41	4	60 60 196	48	0.71
09	FJ0409	35 39 180	45	4	60 60 196	52	0.71

Joining kit / Kit affiancamento / Verbindungsset

-	FJ01AF	- - -	-	-	- - -	-	-
---	--------	-------	---	---	-------	---	---

Additional shelf / Ripiano aggiuntivo / Zusätzlicher Einlegeboden

-	FJ01RIP19	34.6 33.1 2	1	-	- - -	-	-
---	-----------	-------------	---	---	-------	---	---

Additional shelf with coat hanger rail / Ripiano aggiuntivo con portagruccia / Zusätzlicher Einlegeboden mit Bügelhalter

-	FJ01RIP19G	34.6 33.1 5	1.5	-	- - -	-	-
---	------------	-------------	-----	---	-------	---	---

Vertical divider / Separatore verticale / Vertikale Trennwand

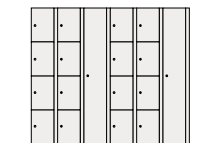
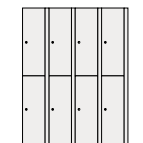
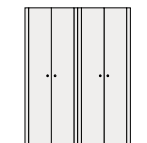
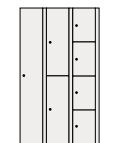
-	FJ01IN140	2 33 145	3.2	-	- - -	-	-
---	-----------	----------	-----	---	-------	---	---

LED lighting (only for 01, 02, 03, 04, 05) / Illuminazione a LED (solo per 01, 02, 03, 04, 05) / LED-Beleuchtung (nur für 01, 02, 03, 04, 05)

-	FJ01LED	- - -	-	-	- - -	-	-
---	---------	-------	---	---	-------	---	---

The packaging details are for assembled products / I dati di imballo si riferiscono al prodotto montato / Die Verpackungsdaten beziehen sich auf das montierte Produkt

## Examples of compositions / Esempi di composizioni / Kompositionsbeispiele

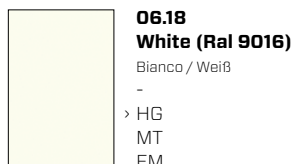
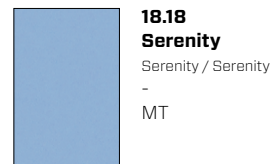
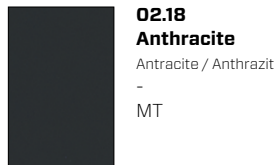
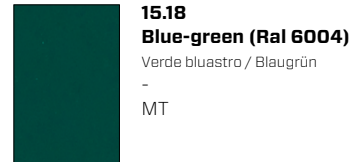
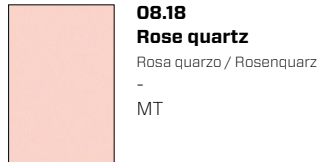
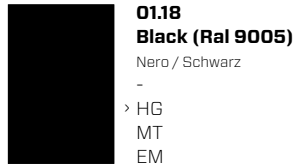


## Metal essentials

HG = High Gloss / Lucido / Glänzend

MT = Matt / Opaco / Matt

EM = Embossed / Goffrato / Gaufriert



## Metal design

HG = High Gloss / Lucido / Glänzend

MT = Matt / Opaco / Matt

EM = Embossed / Goffrato / Gaufriert

## Ultra-matt



**31.18**  
**Cocoa**  
Cacao / Kakao  
-  
MT



**32.18**  
**Dove grey**  
Tortora / Taubengrau  
-  
MT



**33.18**  
**Hemp**  
Canapa / Hanf  
-  
MT



**34.18**  
**Smoke**  
Fumo / Rauchen  
-  
MT



**35.18**  
**Night**  
Notte / Nacht  
-  
MT

## Metallic



**41.18**  
**Gold**  
Oro / Gold  
-  
EM



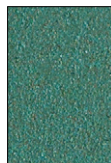
**42.18**  
**Copper**  
Rame / Kupfer  
-  
EM



**43.18**  
**Bronze**  
Bronzo / Bronze  
-  
EM



**44.18**  
**Iron**  
Ferro / Eisen  
-  
EM

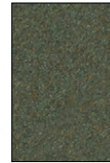


**45.18**  
**Verdigris**  
Verderame / Grünspan  
-  
EM

## Earth



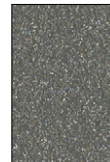
**51.18**  
**Sand**  
Sabbia / Sand  
-  
EM



**52.18**  
**Moss**  
Muschio / Moos  
-  
EM



**53.18**  
**Basalt**  
Basalto / Basalt  
-  
EM



**54.18**  
**Stone**  
Pietra / Stein  
-  
EM



**55.18**  
**Amethyst**  
Ametista / Amethyst  
-  
EM

**Technical information**

**Metal** Non-toxic powder coating for interior use, with no heavy metals. Cured in an oven at 190°C, following degreasing and phosphating. Guaranteed minimum thickness of 50 microns. Minimum resistance to salt spray of 200 hours (in accordance with the ASTM B117 standard). Not suitable for direct contact with food as envisaged in Italian Ministerial Decree 21/03/73. Before the coating is added, it is possible to assess whether to give the products a special treatment to make them more resistant to wear and exposure to the elements. There is a surcharge for this treatment. Requests for other RAL finishes can be considered.

**Informazioni tecniche**

**Metallo** Verniciatura per interni a polveri atossiche prive di metalli pesanti, con passaggio in forno a 190 °C, previo trattamento di sgrassaggio e fosfatazione. Spessore minimo garantito 50 micron, resistenza minima in nebbia salina pari a 200 ore (norma ASTM B117). Non idonea al contatto diretto con gli alimenti come previsto dal decreto italiano D.M. 21/03/73. Prima della verniciatura, è possibile valutare l'applicazione di un trattamento al fine di rendere i prodotti più resistenti all'uso e all'esposizione agli agenti atmosferici. Per tale trattamento è prevista una maggiorazione di prezzo. Altre finiture RAL valutabili su richiesta.

**Technische Informationen**

**Metall** Die Lackierung der gift- und schwermetallfreien Pulverlacke für Innenbereiche erfolgt im Lackierofen bei 190 °C nach vorheriger Entfettung und Phosphatierung. Die garantierte Mindeststärke der Lack-schicht beträgt 50 Mikron bei einer Mindestprüfungsdauer von 200 Stunden im Salznebel (ASTM-Norm B117). Nicht für den direkten Kontakt mit Nahrungsmitteln geeignet, gemäß Ministerialdekret vom 21.03.1973 i.d.g.F. Vor der Lackierung kann die Anwendung einer Behandlung abgewägt werden, um die Produkte für den Gebrauch und gegen Witterungseinflüsse widerstandsfähiger zu machen. Für diese Behandlung ist ein Preisaufschlag vorgesehen. Auf Anfrage können andere RAL-Finishes in Betracht gezogen werden.

**Durable, discreet and suitable for all public and private purposes. They can be flipped 180°, so it is possible to choose whether to open the door on the right or the left.**

**One-piece body** made of sheet metal with thicknesses of 0.7 mm and 1 mm (0.03" and 0.04"). Available ready assembled or in a flat pack.

**Shelves** made of 0.7 mm (0.03") thick sheet metal. Adjustable heights at intervals of 50 mm (1.97").

**Hollow-core metal doors** with concealed metal hinges and 180° opening.

**Key lock** for all models.  
For Just One, push-pull opening also.

**Ventilation** ensured by a full height invisible air channel.

**Adjustable plastic feet** for raising the product from the ground.

**Optional accessories:** LED lighting running all of the way up the internal compartment.

This product is ready assembled (flat packs are only provided on request).

**Solido e discreto, adatto a tutte le esigenze sia nel pubblico che nel privato. Ribaltandolo di 180° permette la scelta di aprire la porta sia da destra che da sinistra.**

**Scocca** monoblocco in lamiera di spessori 0.7 e 1 mm (0.03" e 0.04"). Opzionale versione smontata.

**Ripiani** in lamiera di spessore 0.7 mm (0.03") regolabili in altezza con passo 50 mm (1.97").

**Ante** tamburate con cerniere metalliche a scomparsa e con apertura di 180°.

**Serrature** a chiave per tutti i modelli.  
Per Just One anche apertura Push Pull.

**Areazione** garantita da un canale d'aria invisibile a tutta altezza.

**Piedini** in plastica regolabili per elevazione dal suolo.

**Accessori opzionali:** Illuminazione a led su tutta l'altezza del vano interno.

Il prodotto viene fornito montato (smontato solo su richiesta).

**Solide und diskret ist dieses Produkt geeignet für alle Bedürfnisse sowohl im öffentlichen als auch im privaten Bereich. Kippt man ihn um 180° hat man die Wahl, die Tür sowohl von rechts als auch von links zu öffnen.**

**Monoblock-Korpus** aus 0.7 und 1 mm (0.03" und 0.04") starkem Blech. Unmontierte Version optional.

**Einlegeböden** aus 0.7 mm (0.03") starkem Blech mit Einlegeböden, die in einem Abstand von 50 mm (1.97") höhenverstellbar sind.

**Glatte Türen** mit verdeckten Metallscharnieren und 180°-Öffnung.

**Schlöss** mit Schlüssel. Für Just One, ebenfalls Push-Pull Öffnung.

**Belüftung** durch einen volle Höhe unsichtbaren Luftkanal sichergestellt.

**Höhenverstellbare Kunststofffüße** für den Abstand zum Fußboden.

**Optionales Zubehör:** LED-Beleuchtung über die gesamte Höhe des Innenraums.

Das Produkt wird montiert geliefert (unmontiert nur auf Anfrage).

#### Disclaimer / Esclusione di responsabilità / Haftungsausschluss

Fantin Srl reserves the right to change the dimensions and features of the products contained in this technical data sheet at any time and without prior notice. The finishes illustrated are purely indicative as the accuracy tolerances of printing processes should be taken into account.

Fantin Srl si riserva la facoltà di modificare in qualsiasi momento e senza preavviso le dimensioni e l'esecuzione dei prodotti contenuti nella presente scheda tecnica. Le finiture riportate hanno valore indicativo in quanto soggette alle tolleranze dei processi di stampa.

Fantin Srl behält sich das Recht vor, die angegebenen Maße und Ausführungen der Produkte, welche dieses Produktblatt enthält, jederzeit ohne Vorankündigung zu ändern. Aufgrund drucktechnischer Abweichungen dienen die dargestellten Ausführungen nur der Illustration.

#### Fantin Srl

via San Vito, 43  
33080 - Bannia  
di Fiume Veneto (PN)  
Italia

t +39 0434 959 133  
f +39 0434 560 037  
fantin@fantin.com  
www.fantin.com



UNI EN ISO 9001