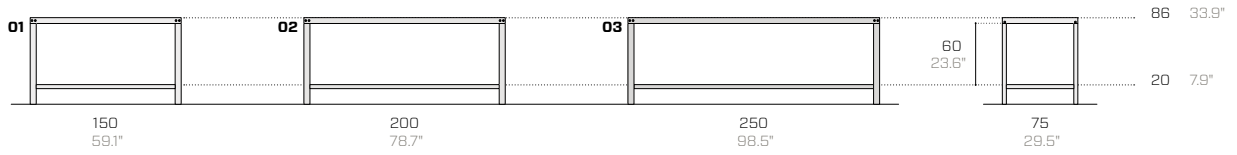


Set

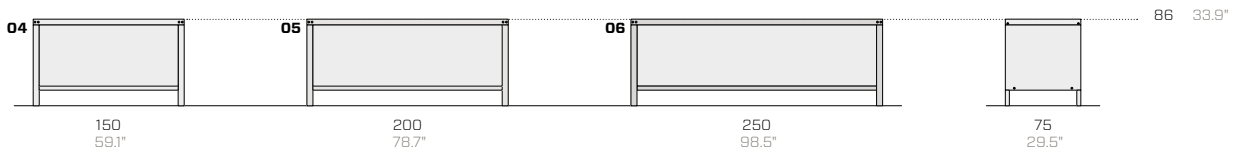
Dorino e Ferruccio Fantin, 1985



Open / Aperto / Offen

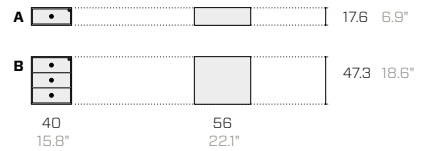
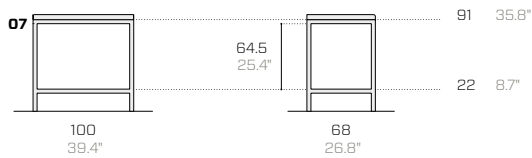


Closed / Chiuso / Geschlossen



Workbench / Banchetto / Werkbank

Drawer units / Cassettiere / Schubladenschränke



Configuration examples / Esempi di configurazione / Konfigurationsbeispiele



Product / Prodotto / Produkt

Packaging / Imballo / Verpackung

No.	Code	Dimensions (w-d-h)	Weight	Max capacity	Dimensions (w-d-h)	Weight	Vol pkg
N.	Codice	Dimensioni (l-p-h)	Peso	Capacità max	Dimensioni (l-p-h)	Peso	Vol. collo
Nr.	Code	Abmessungen (b-t-h)	Gewicht	Max. Tragfähigkeit	Abmessungen (b-t-h)	Gewicht	Vol. Kollo
		cm	kg	kg	cm	kg	mc

Open / Aperto / Offen

01	F231	150 75 86	81	500	156 81 92	89	1.16
02	F252	200 75 86	90	500	206 81 92	98	1.54
03	F253	250 75 86	100	500	256 81 92	108	1.91

Closed / Chiuso / Geschlossen

04	F230	150 75 86	116	500	156 81 92	124	1.16
05	F250	200 75 86	130	500	206 81 92	138	1.54
06	F251	250 75 86	145	500	256 81 92	153	1.91

Workbench / Banchetto / Werkbank

07	F324	100 68 91	78	500	106 74 97	86	0.76
----	------	-----------	----	-----	-----------	----	------

Drawer units / Cassettiere / Schubladenschränke

A	F446	40 56 17.6	8	25	- - -	-	-
B	F445	40 56 47.3	20	75	- - -	-	-

Rear astragal / Profilo posteriore di battuta / Hinteres Anschlagprofil

-	F2301106	150 - 5	-	-	- - -	-	-
-	F2501116	200 - 5	-	-	- - -	-	-
-	F2511126	250 - 5	-	-	- - -	-	-

304 AISI stainless steel work surface cover / Rivestimento piano in acciaio inox AISI 304 / Arbeitsplattenbeschichtung CNS AISI 304

-	F2300010	150 75 -	-	-	- - -	-	-
-	F2500010	200 75 -	-	-	- - -	-	-
-	F2510010	250 75 -	-	-	- - -	-	-

Wall shelf / Mensola a muro / Wandbord

-	FG1230ME	120 30 10	6	40	122 27 32	10	0.11
---	----------	-----------	---	----	-----------	----	------

Metal essentials

	<p>01.18 Black (RAL 9005) Nero / Schwarz --- MT EM ▲ ■</p>		<p>08.20 Rose quartz Rosa quarzo / Rosenquarz --- EM ▲</p>		<p>15.19 Forest green (RAL 6007) Verde bosco / Waldgrün --- EM ▲ ●</p>
	<p>02.18 Anthracite (RAL 7021) Antracite / Anthrazit --- MT EM ▲ ● ■</p>		<p>09.18 Ruby red (RAL 3003) Rosso rubino / Rubinrot --- MT EM ▲</p>		<p>16.19 Turquoise blue (RAL 5018) Blu turchese / Türkisblau --- EM ▲</p>
	<p>03.18 Fantin grey Grigio Fantin / Fantin-Grau --- EM ▲ ● ■</p>		<p>10.18 Traffic red (RAL 3020) Rosso traffico / Verkehrsrot --- MT EM ▲</p>		<p>17.18 Pastel blue (RAL 5024) Blu pastello / Pastellblau --- MT EM ▲ ●</p>
	<p>04.18 Light grey (RAL 7035) Grigio luce / Lichtgrau --- MT EM ▲ ■</p>		<p>11.18 Pure orange (RAL 2004) Arancio puro / Reinorange --- MT EM ▲</p>		<p>18.20 Serenity Serenity / Serenity --- MT EM ▲</p>
	<p>05.19 Cloud grey Grigio nuvola / Walkengrau --- EM ▲ ● ■</p>		<p>12.19 Zinc yellow (RAL 1018) Giallo zinco / Zincksgelb --- EM ▲</p>		<p>19.18 Gentian blue (RAL 5010) Blu genziana / Enzianblau --- MT EM ▲</p>
	<p>06.18 White (RAL 9016) Bianco / Weiß --- MT EM ▲ ■</p>		<p>13.19 Mint green (RAL 6024) Verde menta / Minzgrün --- EM ▲</p>		<p>20.19 Steel blue (RAL 5011) Blu acciaio / Stahlblau --- EM ▲</p>
	<p>07.18 Pearl white (RAL 1013) Bianco perla / Perlweiß --- MT EM ▲ ■</p>		<p>14.18 Sage green (RAL 6021) Verde salvia / Salbeigrün --- MT EM ▲</p>		

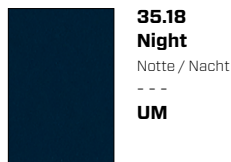
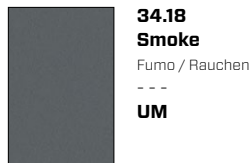
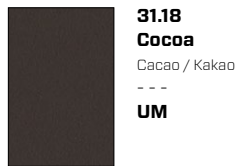
Legend / Legenda / Legende

MT Matt / Opaco / Matt
EM Embossed / Goffrato / Gaufriert

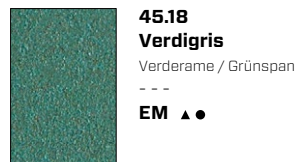
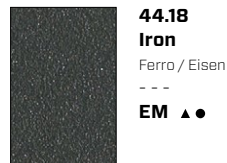
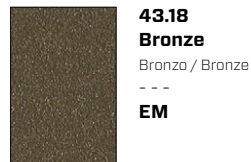
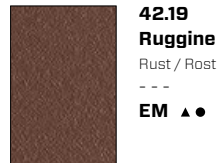
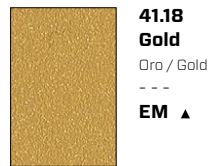
- ▲ For tops / Per i top / Für die Abdeckungen
● For outdoor use / Per esterni / Für den Außenbereich
■ For food use / Per uso alimentare / Für den Lebensmittelgebrauch

Metal design*

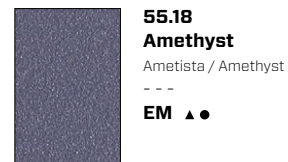
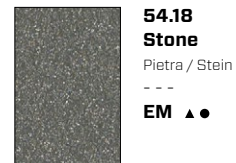
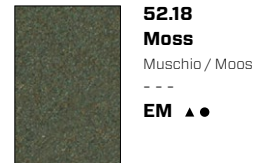
Ultra-matt*



Metallic*



Earth*



Legend / Legenda / Legende

UM Ultra matt / Ultra opaco / Ultra matt

EM Embossed / Goffrato / Gaufriert

▲ For tops / Per i top / Für die Abdeckungen

● For outdoor use / Per esterni / Für den Außenbereich

Technical information

Metal Non-toxic powder coating for interior use, with no heavy metals. Cured in an oven at 190°C, following degreasing and phosphating. Guaranteed minimum thickness of 50 microns. Minimum resistance to salt spray of 200 hours (in accordance with the ASTM B117 standard). Some finishes are suitable for direct contact with food as required by Italian Law Decree D.M. 21/03/73 and subsequent updates. Before the coating is added, it is possible to assess whether to give the products a special treatment to make them more resistant to wear and exposure to the elements. There is a surcharge for this treatment. Requests for other RAL finishes can be considered.

Informazioni tecniche

Metallo Verniciatura per interni a polveri atossiche prive di metalli pesanti, con passaggio in forno a 190 °C, previo trattamento di sgrassaggio e fosfatazione. Spessore minimo garantito 50 micron, resistenza minima in nebbia salina pari a 200 ore (norma ASTM B117). Alcune finiture sono idonee al contatto diretto con alimenti come previsto dal decreto italiano D.M. 21/03/73 e successivi aggiornamenti. Prima della verniciatura, è possibile valutare l'applicazione di un trattamento al fine di rendere i prodotti più resistenti all'uso e all'esposizione agli agenti atmosferici. Per tale trattamento è prevista una maggiorazione di prezzo. Altre finiture RAL valutabili su richiesta.

Technische Informationen

Metall Die Pulverbeschichtung der gift- und schwermetalldfreien Pulverlacke für Innenbereiche erfolgt im Lackierofen bei 190 °C nach vorheriger Entfettung und Phosphatierung. Die garantierte Mindeststärke der Lackschicht beträgt 50 Mikron bei einer Mindestprüfungsdauer von 200 Stunden im Salznebel (ASTM-Norm B117). Einige Oberflächen sind für den direkten Kontakt mit Lebensmitteln geeignet, wie in der Verordnung vorgesehen Italienisch D.M. 21/03/73 und folgende Aktualisierungen. Vor der Pulverbeschichtung kann die Anwendung einer Behandlung abgewägt werden, um die Produkte für den Gebrauch und gegen Witterungseinflüsse widerstandsfähiger zu machen. Für diese Behandlung ist ein Preisaufschlag vorgesehen. Auf Anfrage können andere RAL-Finishes in Betracht gezogen werden.

Thick metal sheets and tubular metal legs for indestructible workbenches.

Load-bearing frame with 60 x 40 mm (2.37" x 1.57") tubular metal legs measuring 2 mm (0.08") thick. Optional covers on 3 sides in sheet metal, 1.5 mm (0.06") thick.

Work surface in sheet metal, 2 mm (0.08") thick with tubular metal reinforcements on the underside.

Lower reinforced storage surface, 1.5 mm (0.06") thick.

Optional accessories: work surface cover made of AISI 304 stainless steel, with a thickness of 1 mm (0.04"). Sheet metal lipped edge, with a thickness of 2 mm (0.08"). Metal drawer units with 1 or 3 drawers, all fitted with a lock.

This is a ready assembled product.

Lamiere di spessore e gambe in tubolare per banchi indistruttibili.

Struttura portante con gambe in tubolare 60 x 40 mm (2.37" x 1.57") di spessore 2 mm (0.08"). Rivestimenti opzionali su 3 lati in lamiera di spessore 1.5 mm (0.06").

Piano di lavoro in lamiera di spessore 2 mm (0.08") con rinforzi inferiori in tubolare.

Piano di appoggio inferiore rinforzato, di spessore 1.5 mm (0.06").

Accessori opzionali: rivestimento del piano di lavoro in acciaio inox AISI 304 di spessore 1 mm (0.04"). Bordo di battuta in lamiera di spessore 2 mm (0.08"). Cassettiere metalliche a 1 o 3 cassetti, sempre dotate di serratura.

Il prodotto viene fornito montato.

Unverwüstliche Werkzeuge dank Platten aus Starkblech und robusten Beinen aus Metallrohr.

Gestell mit Beinen aus Metallrohr 60 x 40 mm (2.37" x 1.57") mit einer Stärke von 2 mm (0.08"). Optional erhältliche Verkleidung auf 3 Seiten aus Blech mit einer Stärke von 1.5 mm (0.06").

Arbeitsplatte aus Blech mit einer Stärke von 2 mm (0.08"), die von unten mit einem Metallrohr verstärkt wird.

Verstärkte Ablageplatte aus Blech mit einer Stärke von 1.5 mm (0.06").

Optionales Zubehör: Beschichtung der Arbeitsplatte mit Edelstahl AISI 304 mit Stärke 1 mm (0.04"). Anschlagkante aus Blech mit einer Stärke von 2 mm (0.08"). Schubladenschränke aus Metall mit 1 oder 3 Schubladen und Verriegelung.

Das Produkt wird montiert geliefert.

Disclaimer / Esclusione di responsabilità / Haftungsausschluss

Fantin Srl reserves the right to change the dimensions and features of the products contained in this technical data sheet at any time and without prior notice. The finishes illustrated are purely indicative as the accuracy tolerances of printing processes should be taken into account.

Fantin Srl si riserva la facoltà di modificare in qualsiasi momento e senza preavviso le dimensioni e l'esecuzione dei prodotti contenuti nella presente scheda tecnica. Le finiture riportate hanno valore indicativo in quanto soggette alle tolleranze dei processi di stampa.

Fantin Srl behält sich das Recht vor, die angegebenen Maße und Ausführungen der Produkte, welche dieses Produktblatt enthält, jederzeit ohne Vorankündigung zu ändern. Aufgrund drucktechnischer Abweichungen dienen die dargestellten Ausführungen nur der Illustration.

Fantin Srl

via San Vito, 43
33080 - Bannia
di Fiume Veneto (PN)
Italia

t +39 0434 959 133
f +39 0434 560 037
fantin@fantin.com
www.fantin.com



UNI EN ISO 9001