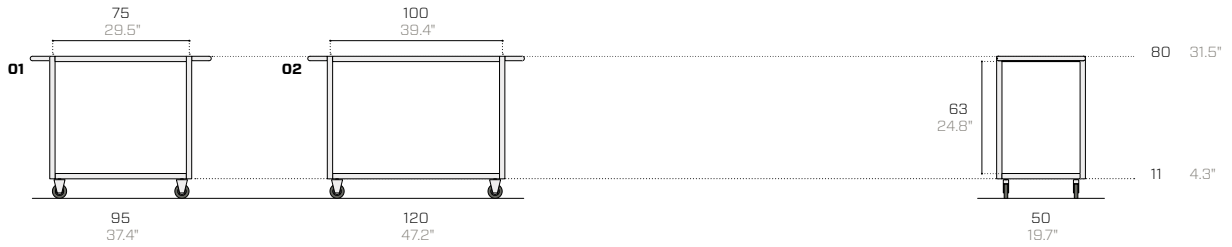


Run

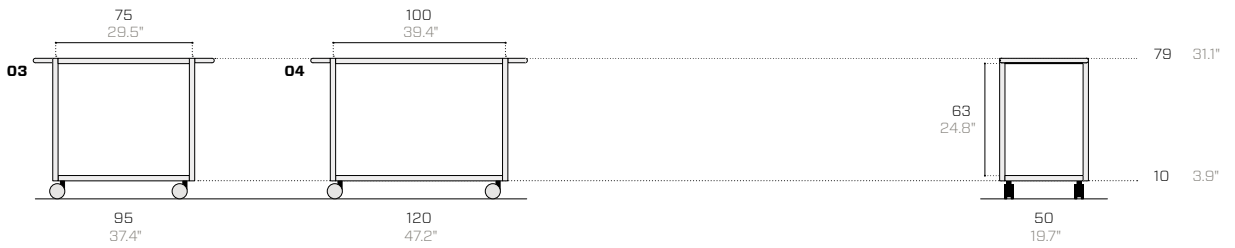
Dorino e Ferruccio Fantin, 1987



Trolley with standard castors / Carrello con ruote standard / Wagen mit Standard-Rollen



Trolley with castors with colour-matching discs / Carrello con ruote con dischi in tinta / Wagen mit Rädern mit farblich abgestimmten Scheiben



Product / Prodotto / Produkt

Packaging / Imballo / Verpackung

No.	Code	Dimensions (w-d-h)	Weight	Max capacity	Dimensions (w-d-h)	Weight	Vol pkg
N.	Codice	Dimensioni (l-p-h)	Peso	Capacità max	Dimensioni (l-p-h)	Peso	Vol. collo
Nr.	Code	Abmessungen (b-t-h)	Gewicht	Max. Tragfähigkeit	Abmessungen (b-t-h)	Gewicht	Vol. Kollo
:	:	cm :	kg :	kg	cm :	kg :	mc

Trolley with standard castors / Carrello con ruote standard / Wagen mit Standard-Rollen

01	F313B	95 50 80	37	200	101 56 86	45	0.49
02	F313A	120 50 80	39	200	126 56 86	47	0.61

Trolley with castors with colour-matching discs / Carrello con ruote con dischi in tinta / Wagen mit Rädern mit farblich abgestimmten Scheiben

03	F313BR	95 50 79	37	200	101 56 86	45	0.49
04	F313AR	120 50 79	39	200	126 56 86	47	0.61

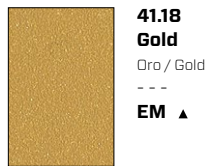


Metal essentials

	<p>01.18 Black (RAL 9005) Nero / Schwarz --- EM ▲ ■ MT</p>		<p>08.20 Rose quartz Rosa quarzo / Rosenquarz --- EM ▲</p>		<p>15.19 Forest green (RAL 6007) Verde bosco / Waldgrün --- EM ▲ ●</p>
	<p>02.18 Anthracite (RAL 7021) Antracite / Anthrazit --- EM ▲ ■ MT</p>		<p>09.18 Ruby red (RAL 3003) Rosso rubino / Rubinrot --- EM ▲</p>		<p>16.19 Turquoise blue (RAL 5018) Blu turchese / Türkisblau --- EM ▲</p>
	<p>03.18 Fantin grey Grigio Fantin / Fantin-Grau --- EM ▲ ■</p>		<p>10.21 Flame red (RAL 3000) Rosso fuoco / Feuerrot --- EM ▲ ●</p>		<p>17.18 Pastel blue (RAL 5024) Blu pastello / Pastellblau --- EM ▲ MT</p>
	<p>04.18 Light grey (RAL 7035) Grigio luce / Lichtgrau --- EM ▲ ■ MT</p>		<p>11.21 Melon yellow (RAL 1028) Giallo melone / Melonengelb --- EM ▲ ●</p>		<p>18.21 Dusty blue (RAL 5014) Azzurro polvere / Staubiges blau --- EM ▲ ●</p>
	<p>05.19 Cloud grey Grigio nuvola / Walkengrau --- EM ▲ ■</p>		<p>12.19 Zinc yellow (RAL 1018) Giallo zinco / Zinkgelb --- EM ▲</p>		<p>19.18 Gentian blue (RAL 5010) Blu genziana / Enzianblau --- EM ▲ ● MT</p>
	<p>06.18 White (RAL 9016) Bianco / Weiß --- EM ▲ ■ MT</p>		<p>13.21 Pastel green (RAL 6019) Verde pastello / Weißgrün --- EM ▲ ●</p>		<p>20.19 Steel blue (RAL 5011) Blu acciaio / Stahlblau --- EM ▲</p>
	<p>07.21 Milk white (RAL 9001) Bianco latte / Milchweiß --- EM ▲ ● ■ MT</p>		<p>14.18 Sage green (RAL 6021) Verde salvia / Salbeigrün --- EM ▲ ● MT</p>		<p>21.21 Coffee brown (RAL 8019) Marrone caffè / Kaffeebraun --- EM ▲</p>

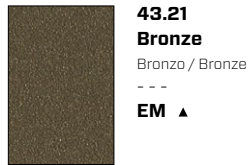
Metal design

Metallic



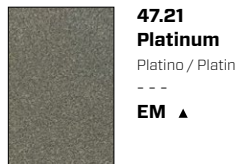
**41.18
Gold**
Oro / Gold

EM ▲



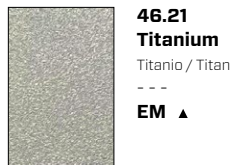
**43.21
Bronze**
Bronzo / Bronze

EM ▲



**47.21
Platinum**
Platino / Platin

EM ▲



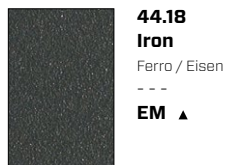
**46.21
Titanium**
Titanio / Titan

EM ▲



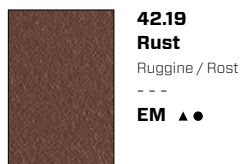
**45.21
Silver**
Argento / Silber

EM ▲



**44.18
Iron**
Ferro / Eisen

EM ▲



**42.19
Rust**
Ruggine / Rost

EM ▲●

Earth



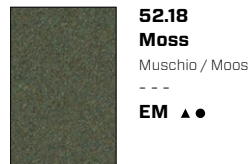
**51.18
Sand**
Sabbia / Sand

EM ▲●



**57.21
Clay**
Creta / Lehm

EM ▲●



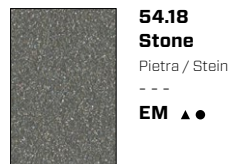
**52.18
Moss**
Muschio / Moos

EM ▲●



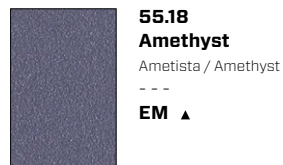
**53.18
Basalt**
Basalto / Basalt

EM ▲●



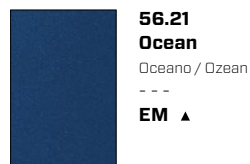
**54.18
Stone**
Pietra / Stein

EM ▲●



**55.18
Amethyst**
Ametista / Amethyst

EM ▲



**56.21
Ocean**
Oceano / Ozean

EM ▲

Surfaces / Superfici / Oberflächen

EM Embossed / Goffrato / Gaufriert
MT Matt / Opaco / Matt

Use / Utilizzo / Verwenden

- ▲ Tops / Top / Arbeitsplatte
- Outdoor / Esterni / Außenbereich
- Food / Alimentare / Lebensmittel

Technical information

Metal Non-toxic powder coating for interior use, with no heavy metals. Cured in an oven at 190°C, following degreasing and phosphating. Guaranteed minimum thickness of 50 microns. Minimum resistance to salt spray of 200 hours (in accordance with the ASTM B117 standard). Some finishes are suitable for direct contact with food as required by Italian Law Decree D.M. 21/03/73 and subsequent updates. Requests for other RAL finishes can be considered.

Informazioni tecniche

Metallo Verniciatura per interni a polveri atossiche prive di metalli pesanti, con passaggio in forno a 190 °C, previo trattamento di sgrassaggio e fosfatazione. Spessore minimo garantito 50 micron, resistenza minima in nebbia salina pari a 200 ore (norma ASTM B117). Alcune finiture sono idonee al contatto diretto con alimenti come previsto dal decreto italiano D.M. 21/03/73 e successivi aggiornamenti. Altre finiture RAL valutabili su richiesta.

Technische Informationen

Metall Die Pulverbeschichtung der gift- und schwermetallfreien Pulverlacke für Innenbereiche erfolgt im Lackierofen bei 190 °C nach vorheriger Entfettung und Phosphatierung. Die garantierte Mindeststärke der Lackschicht beträgt 50 Mikron bei einer Mindestprüfungsdauer von 200 Stunden im Salznebel (ASTM-Norm B117). Einige Oberflächen sind für den direkten Kontakt mit Lebensmitteln geeignet, wie in der Verordnung vorgesehen Italienisch D.M. 21/03/73 und folgende Aktualisierungen. Auf Anfrage können andere RAL-Finishes in Betracht gezogen werden.

A solid frame on swivel castors to carry all loads.

Capacity: 200 kg (441 lb).

Square-section legs measuring 30 x 30 mm (1.18" x 1.18").

Upper and lower work surfaces

in 3 mm (0.12") thick sheet metal with H 30 mm (1.18") limit stop border on all sides.

Tubular handles measuring 25 mm (0.98") in diameter.

Rubber swivel castors measuring 80 mm (3.15") in diameter, with galvanised sheet steel support. Optional swivel castor kit with colour-matching discs.

This is a ready assembled product.

Una solida struttura su ruote girevoli, per il trasporto di qualsiasi carico.

Portata: 200 kg (441 lb).

Gambe in angolare 30 x 30 mm (1.18" x 1.18").

Piani di lavoro superiore e inferiore

in lamiera da 3 mm (0.12") con bordo di battuta h 30 mm (1.18") su tutti i lati.

Maniglioni in tubolare, diametro 25 mm (0.98").

Ruote girevoli diametro 80 mm (3.15") in gomma, con supporto in lamiera d'acciaio zincata. Kit opzionale ruote girevoli con dischi in tinta.

Il prodotto viene fornito montato.

Solider Transportbehälter auf Drehrollen, der für jede Art von Ladung.

Tragfähigkeit 200 kg (441 lb).

Beine aus Winkelblech 30 x 30 mm (1.18" x 1.18").

Arbeitsplatte und Ablageplatte aus Blech St. 3 mm (0.12") mit Anschlagkante h 30 mm (1.18") auf allen Seiten.

Handgriffe aus Metallrohr mit Durchmesser 25 mm (0.98").

Drehrollen mit Durchmesser 80 mm (3.15") aus Gummi mit Halterung aus verzinktem Stahlblech. Optionaler Lenkrollensatz mit farblich abgestimmten Scheiben.

Das Produkt wird montiert geliefert.

Disclaimer / Esclusione di responsabilità / Haftungsausschluss

Fantin Srl reserves the right to change the dimensions and features of the products contained in this technical data sheet at any time and without prior notice. The finishes illustrated are purely indicative as the accuracy tolerances of printing processes should be taken into account.

Fantin Srl si riserva la facoltà di modificare in qualsiasi momento e senza preavviso le dimensioni e l'esecuzione dei prodotti contenuti nella presente scheda tecnica. Le finiture riportate hanno valore indicativo in quanto soggette alle tolleranze dei processi di stampa.

Fantin Srl behält sich das Recht vor, die angegebenen Maße und Ausführungen der Produkte, welche dieses Produktblatt enthält, jederzeit ohne Vorankündigung zu ändern. Aufgrund drucktechnischer Abweichungen dienen die dargestellten Ausführungen nur der Illustration.

Fantin Srl

via San Vito, 43
33080 - Bannia
di Fiume Veneto (PN)
Italia

t +39 0434 959 133
f +39 0434 560 037
fantin@fantin.com
www.fantin.com



UNI EN ISO 9001