

Frame Outdoor

Kitchens & workbenches

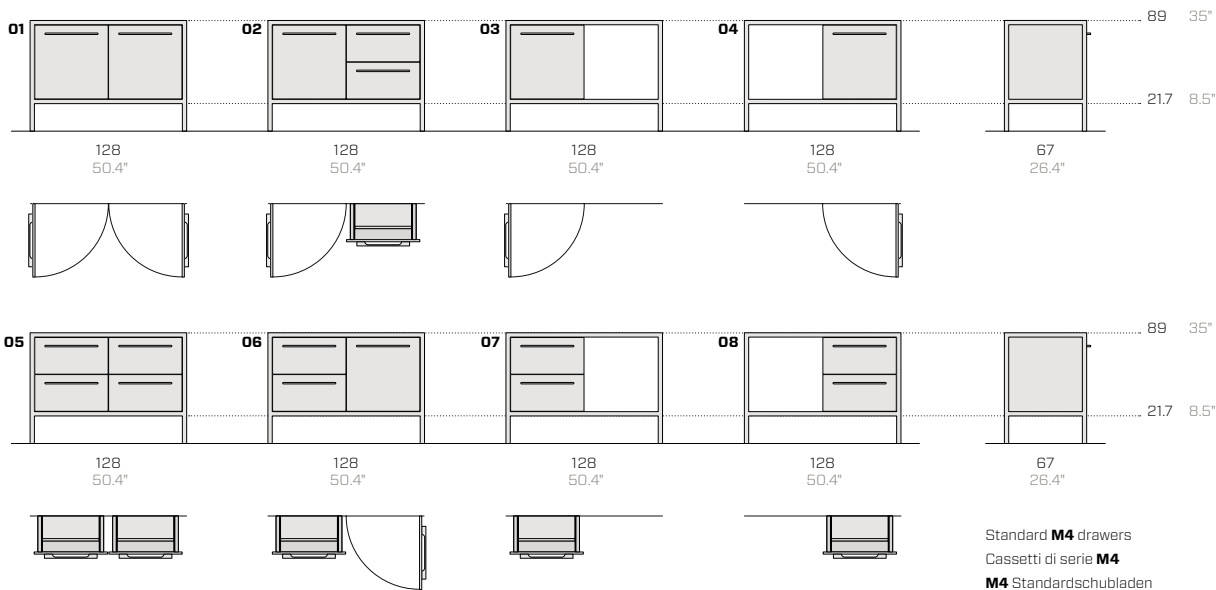
Salvatore Indriolo, 2018-20



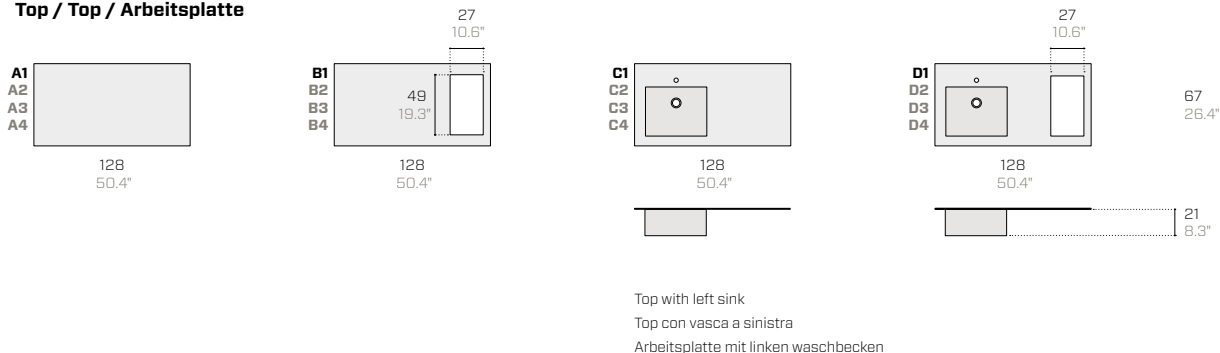
archiproducts
DESIGN AWARDS
—
WINNER 2018



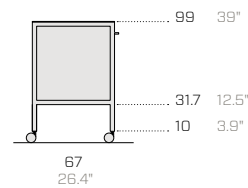
Bases / Basi / Basen



Top / Top / Arbeitsplatte

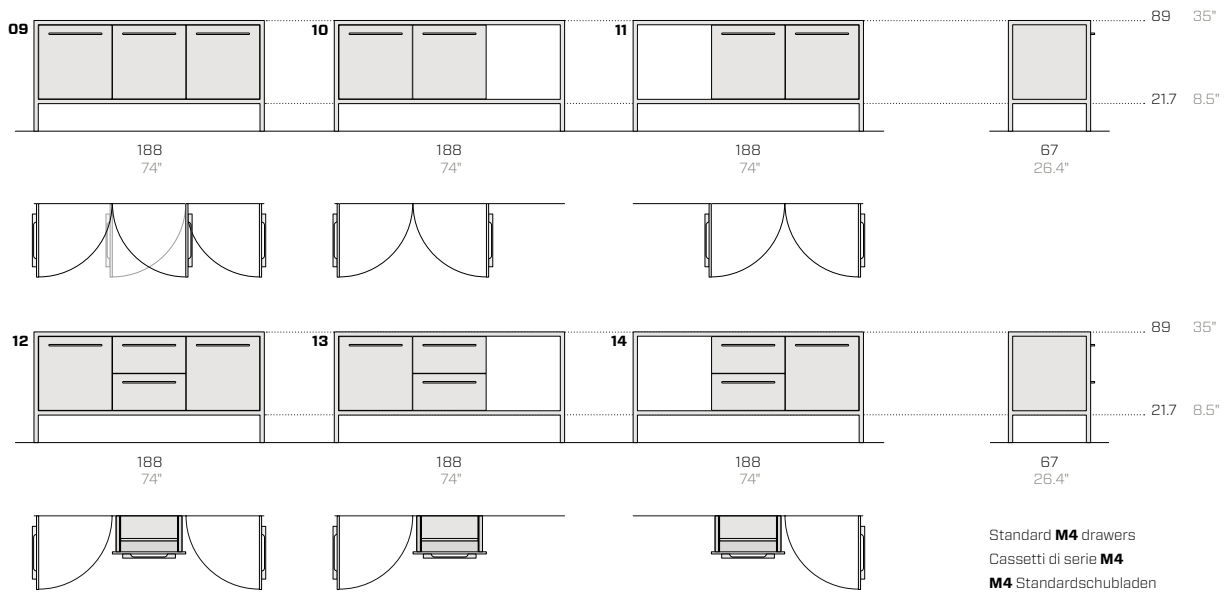


Wheel kit with colour-matching discs / Kit ruote con dischi in tinta / Radsatz mit farblich abgestimmten Scheiben

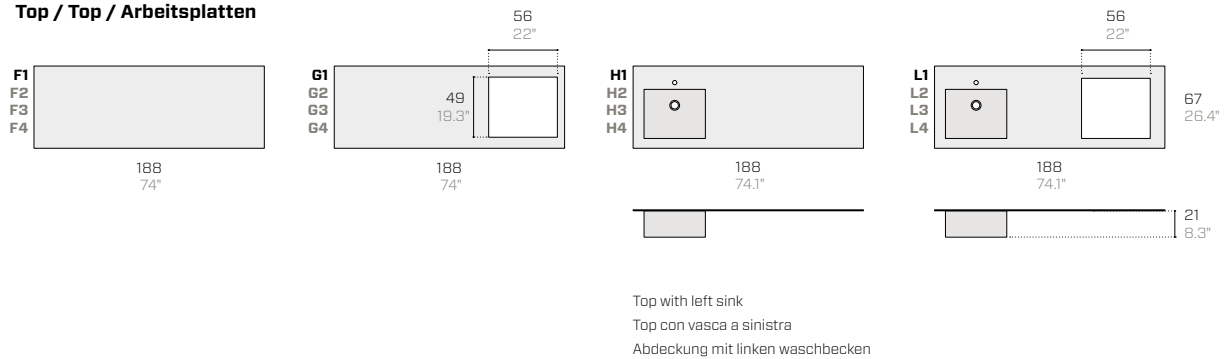


Product / Prodotto / Produkt				Packaging / Imballo / Verpackung						
No.	Code	Dimensions (w-d-h)		Weight	Dimensions (w-d-h)		Weight	Vol pkg		
Nr.	Codice	Dimensioni (l-p-h)		Peso	Dimensioni (l-p-h)		Peso	Vol. collo		
Nr.	Code	Abmessungen (b-t-h)		Gewicht	Abmessungen (b-t-h)		Gewicht	Vol. Kollo		
			cm	kg		cm	kg	mc		
Bases / Basi / Basen										
01	FR85-OUT	128	67	89	60	150	80	107	92	1.30
02	FR91D-OUT	128	67	89	70	150	80	107	102	1.30
03	FR84S-OUT	128	67	89	55	150	80	107	87	1.30
04	FR84D-OUT	128	67	89	55	150	80	107	87	1.30
05	FR93-OUT	128	67	89	60	150	80	107	112	1.30
06	FR91S-OUT	128	67	89	70	150	80	107	102	1.30
07	FR92S-OUT	128	67	89	65	150	80	107	97	1.30
08	FR92D-OUT	128	67	89	65	150	80	107	97	1.30
AISI 304 stainless steel top (satin) / Top in acciaio Inox AISI 304 (satinato) / Arbeitsplatte aus Edelstahl CNS AISI 304 (Satin)										
A1	FRB31S	128	67	0.4	27	137	80	21	37	0.30
B1	FRB33S	128	67	0.4	23	137	80	21	33	0.30
C1	FRB35S	128	67	0.4	25	137	80	50	35	0.60
D1	FRB36S	128	67	0.4	22	137	80	50	32	0.60
AISI 304 stainless steel top (Vintage) / Top in acciaio Inox AISI 304 (Vintage) / Arbeitsplatte aus Edelstahl CNS AISI 304 (Vintage)										
A2	FRB41V	128	67	0.4	27	137	80	21	37	0.30
B2	FRB43V	128	67	0.4	23	137	80	21	33	0.30
C2	FRB45V	128	67	0.4	25	137	80	50	35	0.60
D2	FRB46V	128	67	0.4	22	137	80	50	32	0.60
AISI 316 stainless steel top (satin) / Top in acciaio Inox AISI 316 (satinato) / Arbeitsplatte aus Edelstahl CNS AISI 316 (Satin)										
A3	FRB31S-316	128	67	0.6	27	137	80	21	37	0.30
B3	FRB33S-316	128	67	0.6	23	137	80	21	33	0.30
C3	FRB35S-316	128	67	0.6	25	137	80	50	35	0.60
D3	FRB36S-316	128	67	0.6	22	137	80	50	32	0.60
AISI 316 stainless steel top (Vintage) / Top in acciaio Inox AISI 316 (Vintage) / Arbeitsplatte aus Edelstahl CNS AISI 316 (Vintage)										
A4	FRB41V-316	128	67	0.6	27	137	80	21	37	0.30
B4	FRB43V-316	128	67	0.6	23	137	80	21	33	0.30
C4	FRB45V-316	128	67	0.6	25	137	80	50	35	0.60
D4	FRB46V-316	128	67	0.6	22	137	80	50	32	0.60
Back panel for freestanding kitchen / Schiena per cucina freestanding / Rückwand für freistehende Küche										
-	FRK01S1-OUT	120	3	60	6	124	64	7	7	0.10
Floor attachment cover kit / Kit di copertura allacciamenti a pavimento / Set für Abdeckung der Anschlüsse am Boden										
-	FRK03A1-OUT	60	20	25	3	62	22	27	5	0.10
Wheel kit with colour-matching discs / Kit ruote con dischi in tinta / Radsatz mit farblich abgestimmten Scheiben										
E	FRK31R8-OUT	8	3.5	10	-	-	-	-	-	-

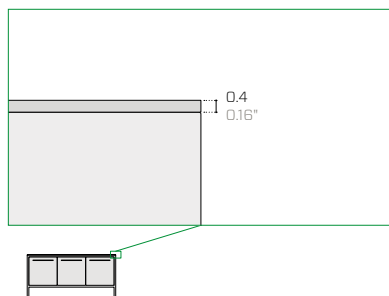
Bases / Basi / Basen



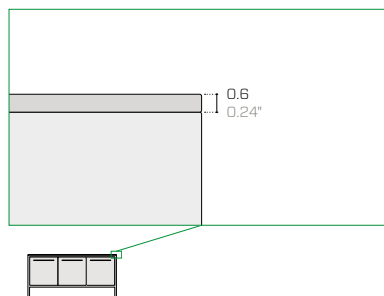
Top / Top / Arbeitsplatten



Top thickness / Spessore dei top / Stärke der Arbeitsplatten



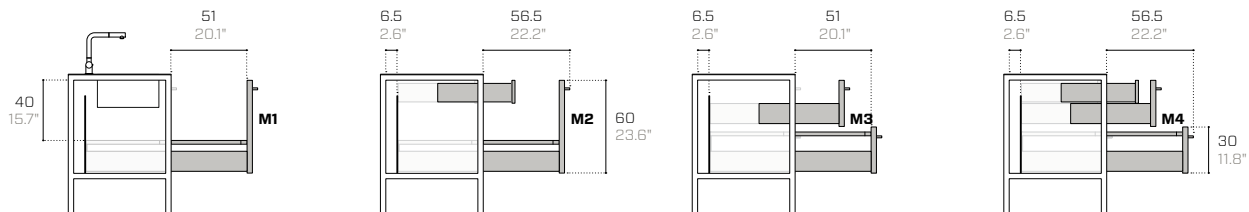
AISI 304 stainless steel top (solid)
Top in acciaio inox AISI 304 (pieno)
Arbeitsplatte aus Edelstahl CNS AISI 304 (massiver)



AISI 316 stainless steel top (honeycomb)
Top in acciaio inox AISI 316 (scatolato)
Arbeitsplatte aus Edelstahl CNS AISI 316 (Waben)

Product / Prodotto / Produkt					Packaging / Imballo / Verpackung					
No.	Code	Dimensions (w-d-h)			Weight	Dimensions (w-d-h)			Weight	Vol pkg
N.	Codice	Dimensioni (l-p-h)			Peso	Dimensioni (l-p-h)			Peso	Vol. collo
Nr.	Code	Abmessungen (b-t-h)			Gewicht	Abmessungen (b-t-h)			Gewicht	Vol. Kollo
		cm			kg	cm			kg	mc
Bases / Basi / Basen										
09	FR87-OUT	188	67	89	92	200	80	107	135	1.80
10	FR86S-OUT	188	67	89	87	200	80	107	130	1.80
11	FR86D-OUT	188	67	89	87	200	80	107	130	1.80
12	FR83-OUT	188	67	89	102	200	80	107	145	1.80
13	FR82S-OUT	188	67	89	97	200	80	107	140	1.80
14	FR82D-OUT	188	67	89	97	200	80	107	140	1.80
AISI 304 stainless steel top (satin) / Top in acciaio Inox AISI 304 (satinato) / Arbeitsplatte aus Edelstahl CNS AISI 304 (Satin)										
F1	FRB61S	188	67	0.4	40	197	80	21	50	0.40
G1	FRB63S	188	67	0.4	31	197	80	21	41	0.40
H1	FRB65S	188	67	0.4	38	197	80	50	48	0.80
L1	FRB66S	188	67	0.4	30	197	80	50	40	0.80
AISI 304 stainless steel top (Vintage) / Top in acciaio Inox AISI 304 (Vintage) / Arbeitsplatte aus Edelstahl CNS AISI 304 (Vintage)										
F2	FRB71V	188	67	0.4	40	197	80	21	50	0.40
G2	FRB73V	188	67	0.4	31	197	80	21	41	0.40
H2	FRB75V	188	67	0.4	38	197	80	50	48	0.80
L2	FRB76V	188	67	0.4	30	197	80	50	40	0.80
AISI 316 stainless steel top (satin) / Top in acciaio Inox AISI 316 (satinato) / Arbeitsplatte aus Edelstahl CNS AISI 316 (Satin)										
F3	FRB61S-316	188	67	0.6	40	197	80	21	50	0.40
G3	FRB63S-316	188	67	0.6	31	197	80	21	41	0.40
H3	FRB65S-316	188	67	0.6	38	197	80	50	48	0.80
L3	FRB66S-316	188	67	0.6	30	197	80	50	40	0.80
AISI 316 stainless steel top (Vintage) / Top in acciaio Inox AISI 316 (Vintage) / Arbeitsplatte aus Edelstahl CNS AISI 316 (Vintage)										
F4	FRB71V-316	188	67	0.6	40	197	80	21	50	0.40
G4	FRB73V-316	188	67	0.6	31	197	80	21	41	0.40
H4	FRB75V-316	188	67	0.6	38	197	80	50	48	0.80
L4	FRB76V-316	188	67	0.6	30	197	80	50	40	0.80
Back panel for freestanding kitchen / Schiena per cucina freestanding / Rückwand für freistehende Küche										
-	FRK02S2-OUT	180	3	60	9	124	64	7	10	0.10
Floor attachment cover kit / Kit di copertura allacciamenti a pavimento / Set für Abdeckung der Anschlüsse am Boden										
-	FRK03A1-OUT	60	20	25	3	62	22	27	5	0.10
Wheel kit with colour-matching discs / Kit ruote con dischi in tinta / Radsatz mit farblich abgestimmten Scheiben										
-	FRK31R8-OUT	8	3.5	10	-	-	-	-	-	-

Drawer kits / Kit cassetti / Schubladen-Set



M1
Kit 1 large drawer
Kit 1 cassettone
Set 1 Kommode



M2
Kit 1 large drawer + 1 inner drawer
Kit 1 cassettone + cassetto interno
Set 1 Kommode + 1 Innenfach



M3
Kit 2 drawers
Kit 2 cassetti
Set 2 Schubladen



M4
Kit 2 drawers + 1 inner drawer
Kit 2 cassetti + cassetto interno
Set 2 Schubladen + 1 Innenfach

Appliances and accessories / Elettrodomestici e accessori / Haushaltsgeräte und Zubehör

BARAZZA



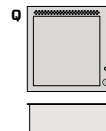
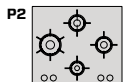
N
Electric Teppanyaki
Teppanyaki elettrico
Elektro Teppanyaki

BARAZZA



P1
Gas hobs
Piani cottura a gas
Gaskochfelder

ELECTROLUX



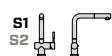
Q
Gas barbecue
Barbecue a gas
Gasgrill

BARAZZA

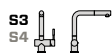


R
Roll-up draining mat
Griglia multiuso avvolgibile
Aufrollbare Abtropfmatte

BARAZZA



S1
S2
S1: Inox AISI 304 Satin
S2: Inox AISI 304 Vintage

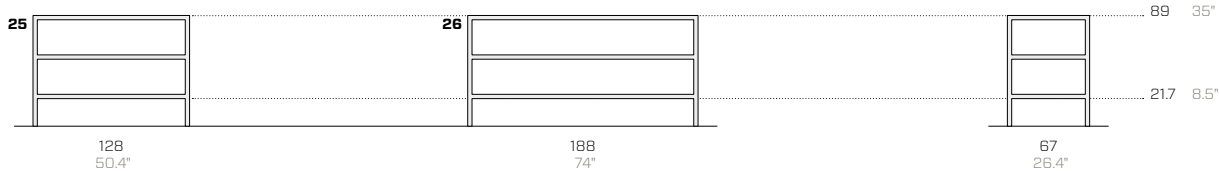


S3
S4
S3: Inox AISI 316 Satin
S4: Inox AISI 316 Vintage

S
Steel taps
Rubinetti
Wasserhähne

Product / Prodotto / Produkt						Packaging / Imballo / Verpackung				
No.	Code	Brand code	Dimensions (w-d-h)			Weight	Dimensions (w-d-h)			Weight
Nr.	Codice	Codice marca	Dimensioni (l-p-h)			Peso	Dimensioni (l-p-h)			Peso
Nr.	Code	Herstellercode	Abmessungen (b-t-h)			Gewicht	Abmessungen (b-t-h)			Gewicht
			cm			kg	cm			kg
Drawer kits (surcharge on the door price) / Kit cassetti (sovrapprezzo costo anta) / Schubladen-Set (Zuschlag auf den Türpreis)										
M1	FRK21C1-OUT	-	60	55	60	13	63	58	63	14
M2	FRK20C2-OUT	-	60	55	60	18	63	58	63	19
M3	FRK22C2-OUT	-	60	55	60	15	63	58	63	16
M4	FRK23C3-OUT	-	60	55	60	20	63	58	63	21
Aluminum cutlery dividers / Divisori portaposate in alluminio / Besteckteiler aus aluminium										
-	FRK09DP	-	48	8	5	1	50	10	6	1
Waste separation systems / Kit di contenitori per raccolta differenziata / Abfalltrennsystem										
-	FRK61DIF	-	44	29	22	3	50	10	6	1
-	FRK60DIF	-	46	30	30	2	50	10	6	1
Additional shelf / Ripiano aggiuntivo / Zusätzlicher Einlegeboden										
-	FRK10R1	FRK10R1-OUT	57	46	2	3	50	10	6	3
Electric Teppanyaki / Teppanyaki elettrico / Elektro Teppanyaki										
N	FRE34	1PTITK	29	51	5.4	6	39	60	13	10
Gas hobs / Piani cottura a gas / Gaskochfelder										
P1	FRE35	1PTI2	29	51	5.4	6	39	60	13	10
P2	FRE33	PQF645UOX	59	52	6.5	12	80	60	15	14
P3	FRE21	PQX320V	27	49	6.5	6	48	60	15	10
Q	FRE01	FRE01	56	56	19.5	-	-	-	-	-
Accessories / Accessori / Zubehör										
R	FRB11	-	47	45	1	1	50	8	8	1
S1	FRB10S	-	13	26	27	5	59	25	10	8
S2	FRB10V	-	13	26	27	5	59	25	10	8
S3	FRB10S-316	-	13	26	27	5	59	25	10	8
S4	FRB10V-316	-	13	26	27	5	59	25	10	8
Upstand (AISI 304, satin and Vintage finish) / Alzatina (AISI 304, satinato o Vintage) / Wischleiste (AISI 304, satin- und Vintage-Finish)										
-	FRB81S	-	128	0.4	4	2.5	137	2	10	3
-	FRB82S	-	188	0.4	4	3.5	197	2	10	4
-	FRB81V	-	128	0.4	4	2.5	137	2	10	3
-	FRB82V	-	188	0.4	4	3.5	197	2	10	4
Upstand (AISI 316, satin and Vintage finish) / Alzatina (AISI 316, satinato o Vintage) / Wischleiste (AISI 316, satin- und Vintage-Finish)										
-	FRB81S-316	-	128	0.4	4	2.5	137	2	10	3
-	FRB82S-316	-	188	0.4	4	3.5	197	2	10	4
-	FRB81V-316	-	128	0.4	4	2.5	137	2	10	3
-	FRB82V-316	-	188	0.4	4	3.5	197	2	10	4

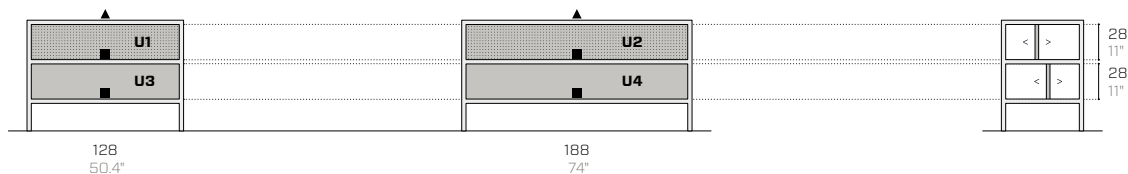
Bases / Basi / Basen



Top / Top / Arbeitsplatte



Accessories and details / Accessori e dettagli / Zubehör und Details

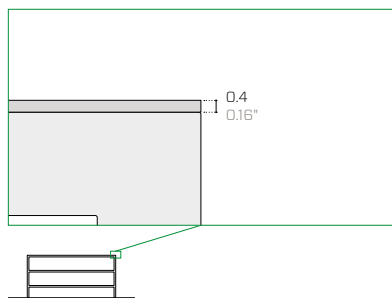


▲ Top (available in 2 versions)
 Top (disponibile in 2 versioni)
 Arbeitsplatte (in 2 Versionen erhältlich)

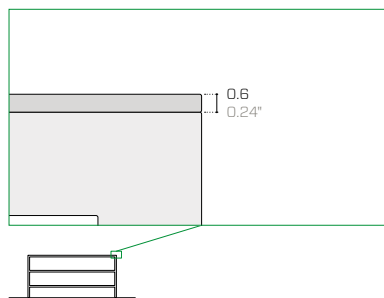
■ Lower shelves in metal (not replaceable)
 Ripiani inferiori in metallo (non sostituibili)
 Untere Regale aus Metall (nicht austauschbar)

U. Full or perforated separator (freely positionable)
 Separatore pieno o forato (liberamente posizionabile)
 Voller oder perforierter Separator (frei positionierbar)

Top thickness / Spessore dei top / Stärke der Arbeitsplatte



AISI 304 stainless steel top (solid)
 Top in acciaio inox AISI 304 (pieno)
 Arbeitsplatte aus Edelstahl CNS AISI 304 (massiver)

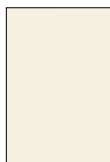


AISI 316 stainless steel top (honeycomb)
 Top in acciaio inox AISI 316 (scatolato)
 Arbeitsplatte aus Edelstahl CNS AISI 316 (Waben)

Product / Prodotto / Produkt					Packaging / Imballo / Verpackung					
No.	Code	Dimensions (w-d-h)			Weight	Dimensions (w-d-h)			Weight	Vol pkg
N.	Codice	Dimensioni (l-p-h)			Peso	Dimensioni (l-p-h)			Peso	Vol. collo
Nr.	Code	Abmessungen (b-t-h)			Gewicht	Abmessungen (b-t-h)			Gewicht	Vol. Kollo
				cm	kg			cm	kg	mc
Bases / Basi / Basen										
25	FR88-OUT	128	67	89	60	150	80	107	103	1.30
26	FR81-OUT	188	67	89	75	200	80	107	118	1.80
AISI 304 stainless steel top (satin) / Top in acciaio Inox AISI 304 (satinato) / Arbeitsplatte aus Edelstahl CNS AISI 304 (Satin)										
T1	FRB31S	128	67	0.4	28	137	80	21	50	0.30
T2	FRB61S	188	67	0.4	40	197	80	21	50	0.40
AISI 304 stainless steel top (Vintage) / Top in acciaio Inox AISI 304 (Vintage) / Arbeitsplatte aus Edelstahl CNS AISI 304 (Vintage)										
T3	FRB41V	128	67	0.4	28	137	82	21	50	0.30
T4	FRB71V	188	67	0.4	40	197	82	21	50	0.40
AISI 316 stainless steel top (satin) / Top in acciaio Inox AISI 316 (satinato) / Arbeitsplatte aus Edelstahl CNS AISI 316 (Satin)										
T5	FRB31S-316	128	67	0.6	28	137	80	21	50	0.30
T6	FRB61S-316	188	67	0.6	40	197	80	21	50	0.40
AISI 316 stainless steel top (Vintage) / Top in acciaio Inox AISI 316 (Vintage) / Arbeitsplatte aus Edelstahl CNS AISI 316 (Vintage)										
T7	FRB41V-316	128	67	0.6	28	137	80	21	50	0.30
T8	FRB71V-316	188	67	0.6	40	197	80	21	50	0.40
Perforated separator / Separatore forato / Perforierter Separator										
U1	FRK05SF-OUT	128	28	4	4	132	32	5	9	0.10
U2	FRK06SF-OUT	188	28	4	5	192	32	5	10	0.10
Full separator / Separatore pieno / Voller Separator										
U3	FRK07SC-OUT	128	28	4	5	132	32	5	9	0.10
U4	FRK08SC-OUT	188	28	4	6	192	32	5	10	0.10
Wheel kit with colour-matching discs / Kit ruote con dischi in tinta / Radsatz mit farblich abgestimmten Scheiben										
-	FRK31R8-OUT	8	4.5	10	-	-	-	-	-	-

Food-grade tops are found in the following pages / Top a uso alimentare nelle pagine seguenti / Lebensmittel-geeignete Arbeitsplatten auf den folgenden Seiten

Metal essentials

**07.21
Milk white (RAL 9001)**

Bianco latte / Milchweiß

EM ▲●■

**15.19
Forest green (RAL 6007)**

Verde bosco / Waldgrün

EM ▲●

**10.21
Flame red (RAL 3000)**

Rosso fuoco / Feuerrot

EM ▲●

**18.21
Dusty blue (RAL 5014)**

Azzurro polvere / Staubiges blau

EM ▲●

**11.21
Melon yellow (RAL 1028)**

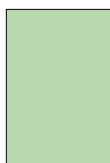
Giallo melone / Melonengelb

EM ▲●

**19.18
Gentian blue (RAL 5010)**

Blu genziana / Enzianblau

EM ▲●

**13.21
Pastel green (RAL 6019)**

Verde pastello / Weißgrün

EM ▲●

**14.18
Sage green (RAL 6021)**

Verde salvia / Salbeigrün

EM ▲●

Metal design

Metallic



42.19
Rust
Ruggine / Rost

EM ▲●

Earth



51.18
Sand
Sabbia / Sand

EM ▲●



57.21
Clay
Creta / Lehm

EM ▲●



52.18
Moss
Muschio / Moos

EM ▲●



53.18
Basalt
Basalto / Basalt

EM ▲●



54.18
Stone
Pietra / Stein

EM ▲●

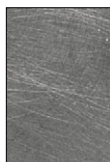
Surfaces / Superfici / Oberflächen

EM Embossed / Goffrato / Gaufriert

Use / Utilizzo / Verwenden

- ▲ Tops / Top / Arbeitsplatte
- Outdoor / Esterni / Außenbereich
- Food / Alimentare / Lebensmittel

Inox Barazza



**K1.18
Inox Vintage**

Inox Vintage / Inox Vintage

HG ▲●■



**K2.19
Inox Satin**

Inox satinato / Inox satiniert

HG ▲●■

Surfaces / Superfici / Oberflächen

HG High Gloss / Lucido / Glänzend

Use / Utilizzo / Verwenden

- ▲ Tops / Top / Arbeitsplatte
- Outdoor / Esterni / Außenbereich
- Food / Alimentare / Lebensmittel

Technical information

All Fantin outdoor products should be placed under a shelter, protected from atmospheric agents. It is advisable to clean the surfaces regularly according to the instructions for use and maintenance.

Metal Non-toxic powder coating for interior use, with no heavy metals. Cured in an oven at 190°C, following degreasing and phosphating. Guaranteed minimum thickness of 50 microns. Minimum resistance to salt spray of 200 hours (in accordance with the ASTM B117 standard). Some finishes are suitable for direct contact with food as required by Italian Law Decree D.M. 21/03/73 and subsequent updates. Before the coating is added, it is possible to give the products a special treatment to make them more resistant to wear and exposure to the elements. Requests for other RAL finishes can be considered.

AISI 304 stainless steel Kitchen top with a thickness of 4 mm (0.16"), with Vintage (exclusive Barazza manual processing, making it quicker and easier to maintain) or satin finish.

AISI 316 stainless steel Steel top with 6 mm (0.24") slim edge, made with an aluminium honeycomb support, available in Vintage (exclusive Barazza manual processing, making it quicker and easier to maintain) or satin finish. AISI 316 stainless steel – a material suitable for outdoor use – provides better resistance in environments where saltiness is present, particularly in seaside areas. It is also resistant to the corrosive effects of chlorine and particularly aggressive detergents.

Informazioni tecniche

I prodotti Fantin outdoor devono essere collocati sotto una copertura, al riparo dalla esposizione diretta agli agenti atmosferici. Si consiglia di pulire regolarmente le superfici, seguendo le prescrizioni di uso e manutenzione.

Metallo Verniciatura per interni a polveri atossiche prive di metalli pesanti, con passaggio in forno a 190°C, previo trattamento di sgrassaggio e fosfatazione. Spessore minimo garantito 50 micron, resistenza minima in nebbia salina pari a 200 ore (norma ASTM B117). Alcune finiture sono idonee al contatto diretto con alimenti come previsto dal decreto italiano D.M. 21/03/73 e successivi aggiornamenti. Prima della verniciatura, è possibile l'applicazione di un trattamento al fine di rendere i prodotti più resistenti all'uso e all'esposizione agli agenti atmosferici. Altre finiture RAL sono valutabili su richiesta.

Acciaio Inox AISI 304 Piano cucina spessore 4 mm (0.16") con finitura Vintage (lavorazione manuale esclusiva Barazza, la cui manutenzione è più semplice e agevole) o satinata.

Acciaio Inox AISI 316 Piano in acciaio con Bordo Slim 6 mm (0.24"), realizzato con un supporto in alveolare di alluminio, disponibile in finitura Vintage (lavorazione manuale esclusiva Barazza, la cui manutenzione è più semplice e agevole) o satinata. L'acciaio inox AISI 316 – materiale idoneo per ambienti esterni – garantisce migliore resistenza in ambienti con presenza di sale, in modo particolare nelle zone di mare. È inoltre resistente agli effetti corrosivi del cloro e a detersivi particolarmente aggressivi.

Technische Informationen

Alle Outdoor Fantin-Produkte müssen vor Witterungseinflüssen unter einem Schutzdach aufzustellen. Es ist ratsam, die Oberflächen regelmäßig unter Beachtung der Gebrauchs- und Wartungsanweisungen zu reinigen.

Metall Die Pulverbeschichtung der gift- und schwermetallfreien Pulverlacke für Innenbereiche erfolgt im Lackierofen bei 190°C nach vorheriger Entfettung und Phosphatierung. Die garantierte Mindeststärke der Lackschicht beträgt 50 Mikron bei einer Mindestprüfungsdauer von 200 Stunden im Salznebel (ASTM-Norm B117). Einige Oberflächen sind für den direkten Kontakt mit Lebensmitteln geeignet, wie in der Verordnung vorgesehen Italienisch D.M. 21/03/73 und folgende Aktualisierungen. Vor der Pulverbeschichtung ist es möglich eine Behandlung auf die Oberfläche aufzutragen, um die Produkte für den Gebrauch und gegen Witterungseinflüsse widerstandsfähiger zu machen. Auf Anfrage können andere RAL-Finishes in Betracht gezogen werden.

Edelstahl CNS AISI 304 Küchenarbeitsplatte Stärke 4 mm (0.16") mit Vintage-Finish (exklusive Handverarbeitung Barazza, die leicht und bequem zu pflegen ist) oder satiniert.

Edelstahl CNS AISI 316 Stahlplatte mit 6 mm (0.24") Slim Edge, mit einem Aluminium Wabenträger gefertigt, in Vintage-Finish (exklusive Handverarbeitung Barazza, die leicht und bequem zu pflegen ist) oder satiniert erhältlich. Edelstahl AISI 316 – einem für den Außeneinsatz geeigneten Material – bietet eine bessere Beständigkeit in Umgebungen, in denen Salzigkeit vorhanden ist, insbesondere in Meeresgebieten. Er ist auch beständig gegen die korrosive Wirkung von Chlor und besonders aggressiven Reinigungsmitteln.

Kitchens and benches from the Frame range are also suitable for outdoor use thanks to a cathaphoretic coating that prevents rust.

Frame made of 35 x 35 mm (1.38" x 1.38") square tubes. Concealed adjustable feet.

Top made of AISI 304 stainless steel filler panel with a thickness of 4 mm (0.16") with satin or Vintage finish (with exclusive Barazza manual processing). Also available with integrated 500 x 400 x 219 mm (19.69" x 15.75" x 8.62") sink.

Top made of AISI 316 stainless steel filler panel with a thickness of 6 mm (2.36") with satin or Vintage finish (with exclusive Barazza manual processing). Also available with integrated 500 x 400 x 219 mm (19.69" x 15.75" x 8.62") sink. AISI 316 stainless steel provides better resistance in particularly aggressive outdoor environments (e.g. in the presence of saltiness).

Optional integrated sink 500 x 400 x 219 mm (19.69" x 15.75" x 8.62") with radius 0 (for AISI 304) or radius 12 mm (for AISI 316).

Doors inset in the frame, made of bent and filled sheet metal. Door thickness: 20 mm (0.79"). Metal handles with a coating in a colour to match the doors. Soft-close dampening hinges. 95° door opening.

Drawers with fronts inset in the frame, made of bent and filled sheet metal. Drawer front thickness: 20 mm (0.79"). Metal handles with a coating in a colour to match the drawer fronts. Drawers with Hettich runners and built-in stabilization and soft-close systems. Capacity: 40 kg (88.18 lb).

Sides and bases inset in the frame, made of bent sheet metal; filled sides.

Optional backboards inset in the frame, made of metal.

Optional accessories: appliances from Barazza and Electrolux; inside shelves made of bent sheet metal.

The product should be placed under a shelter, protected from atmospheric agents. It is advisable to clean the surfaces regularly according to the instructions for use and maintenance. Protective lining supplied.

The kitchens are ready assembled (except for the tops).

Cucine e banconi del programma Frame, sono disponibili per esterni grazie a un trattamento di cataforesi che previene la formazione della ruggine.

Telaio in tubolare quadrato 35 x 35 mm (1.38" x 1.38"). Piedini invisibili regolabili.

Top in acciaio Inox AISI 304 di spessore 4 mm (0.16") con finitura satinata o Vintage (lavorazione manuale esclusiva Barazza). Disponibile anche con vasca integrata 500 x 400 x 219 mm (19.69" x 15.75" x 8.62").

Top in acciaio Inox AISI 316 di spessore 6 mm (2.36") con finitura satinata o Vintage (lavorazione manuale esclusiva Barazza). Disponibile anche con vasca integrata 500 x 400 x 219 mm (19.69" x 15.75" x 8.62"). L'acciaio inox AISI 316 garantisce migliore resistenza in ambienti esterni particolarmente aggressivi (ad es. in presenza di sal-sedine).

Vasca integrata opzionale 500 x 400 x 219 mm (19.69" x 15.75" x 8.62") a raggio 0 (per AISI 304 da 4 mm pieno) o a raggio 12 mm (per AISI 316 da 6 mm scatoletto in allumino).

Ante in luce al telaio, in lamiera piegata e tamponata. Spessore delle ante 20 mm (0.79"). Maniglie in metallo verniciate in tinta con le ante. Cerniere ammortizzate. Apertura ante di 95°.

Cassetti con frontali in luce al telaio spessore 20 mm (0.79"), in lamiera piegata e tamponata. Maniglie in metallo verniciate in tinta con i frontali dei cassetti. Cassetti con guide Hettich, sistemi di stabilizzazione e soft-close integrati con portata 40 kg (88.18 lb).

Fianchi e fondi in luce al telaio, in lamiera piegata; fianchi tamponati.

Schiene opzionali in metallo in luce al telaio.

Accessori opzionali: elettrodomestici Barazza ed Electrolux; ripiani interni in lamiera piegata.

Il prodotto dev'essere collocato sotto una copertura, al riparo dall'esposizione diretta agli agenti atmosferici. Si consiglia di pulire regolarmente le superfici seguendo le prescrizioni di uso e manutenzione. Fodera protettiva in dotazione.

Le cucine vengono fornite montate (top escluso).

Küchen und Wekbänke aus dem Frame-Programm sind dank einer katodische Tauchlackierung, die Rost verhindert, auch für den Außenbereich geeignet.

Gestell aus Vierkantröhr 35 x 35 mm (1.38" x 1.38"). Unsichtbare, einstellbare FüÙe.

Arbeitsplatte in massiver Edelstahl CNS AISI 304 in Stärke 4 mm (0.16") mit Satin- oder Vintage-Finish (exklusive Handverarbeitung Barazza). Ebenfalls verfügbar mit integriertem Waschbecken 500 x 400 x 219 mm (19.69" x 15.75" x 8.62").

Arbeitsplatte in Edelstahl CNS AISI 316 in Stärke 6 mm (2.36") mit Satin- oder Vintage-Finish (exklusive Handverarbeitung Barazza). Ebenfalls verfügbar mit integriertem Waschbecken 500 x 400 x 219 mm (19.69" x 15.75" x 8.62"). Edelstahl AISI 316 garantiert eine bessere Beständigkeit bei besonders aggressiven äußeren Umweltbedingungen (z.B. in Gegenwart von Salzigkeit).

Optional integrierte Spüle 500 x 400 x 219 mm (19.69" x 15.75" x 8.62") mit Radius 0 (für AISI 304) oder 12 mm (für AISI 316).

Türen aus gedämmtem Falzblech, bündig mit dem Gestell. Stärke der Türen 20 mm (0.79"). Pulverbeschichtete Metallgriffe gleichfarbig mit den Türen. Gedämpfte Scharniere. 95° Türöffnung.

Schubladen aus gedämmtem Falzblech, mit Fronten bündig mit dem Gestell. Schubladenfrontstärke: 20 mm (0.79"). Pulverbeschichtete Metallgriffe gleichfarbig mit den Schubladenfronten. Schubladen mit Führungsschienen Hettich mit Stabilisations- und Soft-Close-Systemen und mit einer Tragfähigkeit von 40 kg (88.18 lb).

Seiten und Basen aus Falzblech, bündig mit dem Gestell; bündig Seiten.

Optionale Rückwände aus Metall, bündig mit dem Gestell.

Optionales Zubehör: Haushaltsgeräte von Barazza und Electrolux; Innere Einlegeböden aus Falzblech.

Das Produkt muss vor Witterungseinflüssen unter einem Schutzdach aufzustellen. Es ist ratsam, die Oberflächen regelmäßig unter Beachtung der Gebrauchs- und Wartungsanweisungen zu reinigen. Schutzfutter mitgeliefert.

Die Küchen werden montiert geliefert (ohne Arbeitsplatten).

Disclaimer / Esclusione di responsabilità / Haftungsausschluss

Fantin Srl reserves the right to change the dimensions and features of the products contained in this technical data sheet at any time and without prior notice. The finishes illustrated are purely indicative as the accuracy tolerances of printing processes should be taken into account.

Fantin Srl si riserva la facoltà di modificare in qualsiasi momento e senza preavviso le dimensioni e l'esecuzione dei prodotti contenuti nella presente scheda tecnica. Le finiture riportate hanno valore indicativo in quanto soggette alle tolleranze dei processi di stampa.

Fantin Srl behält sich das Recht vor, die angegebenen Maße und Ausführungen der Produkte, welche dieses Produktblatt enthält, jederzeit ohne Vorankündigung zu ändern. Aufgrund drucktechnischer Abweichungen dienen die dargestellten Ausführungen nur der Illustration.

Fantin Srl

via San Vito, 43
33080 - Bannia
di Fiume Veneto (PN)
Italia

t +39 0434 959 133
f +39 0434 560 037
fantin@fantin.com
www.fantin.com



UNI EN ISO 9001