

Frame

Sideboards & cupboards

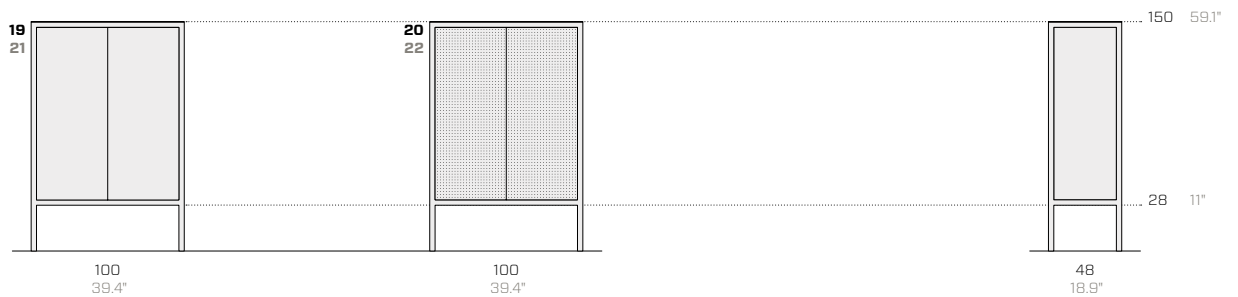
Salvatore Indriolo, 2018



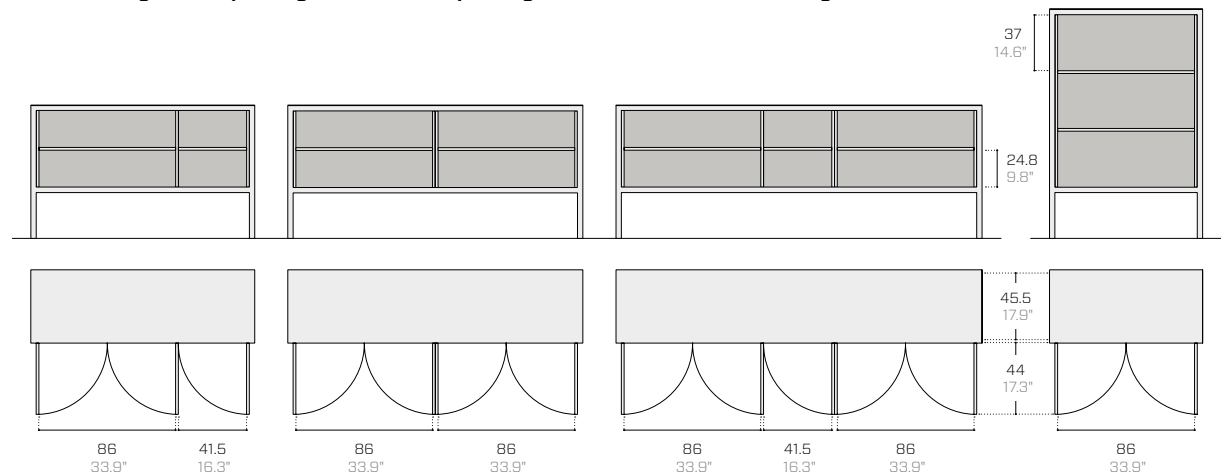
Sideboard / Madia / Anrichte



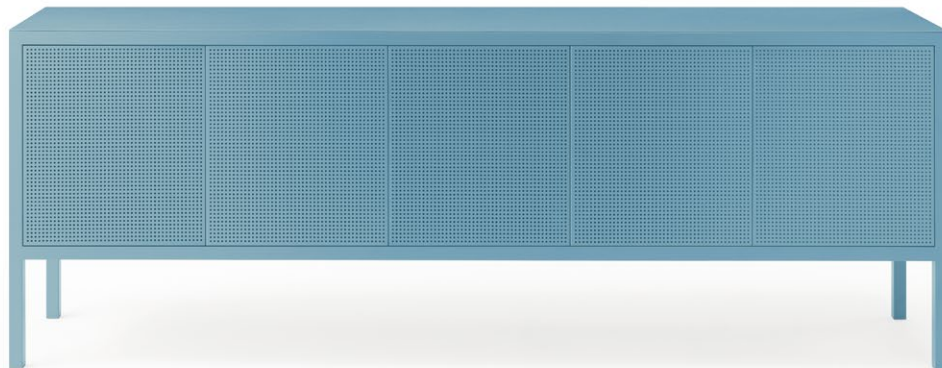
Cupboard / Credenza / Küchenbuffet



Internal configurations / Configurazioni interne / Konfigurationen der Innenausstattung



Product / Prodotto / Produkt						Packaging / Imballo / Verpackung						
No.	Code	Dimensions (w-d-h)			Weight	Doors	Dimensions (w-d-h)			Weight	Vol pkg	
N.	Codice	Dimensioni (l-p-h)			Peso	Ante	Dimensioni (l-p-h)			Peso	Vol. collo	
Nr.	Code	Abmessungen (b-t-h)			Gewicht	Türen	Abmessungen (b-t-h)			Gewicht	Vol. Kollo	
				cm		kg			cm		kg	mc
Sideboard / Madia con top in metallo / Anrichte												
01	FR11	147	48	87	71	3	150	80	107	103	1.30	
02	FR12	194	48	87	87	4	200	80	107	130	1.80	
03	FR13	240	48	87	108	5	240	80	107	159	2.10	
04	FR14	147	48	87	69	3	150	80	107	101	1.30	
05	FR15	194	48	87	85	4	200	80	107	128	1.80	
06	FR16	240	48	87	105	5	240	80	107	156	2.10	
07	FR17	147	48	87	68	3	150	80	107	100	1.30	
08	FR18	194	48	87	84	4	200	80	107	127	1.80	
09	FR19	240	48	87	103	5	240	80	107	154	2.10	
Sideboard with top made of Laminam / Madia con top in Laminam / Anrichte mit Abdeckung in Laminam												
10	FR11LA	147	48	87.9	77	3	150	80	110	109	1.40	
11	FR12LA	194	48	87.9	96	4	200	80	110	128	1.80	
12	FR13LA	240	48	87.9	119	5	240	80	110	151	2.20	
13	FR14LA	147	48	87.9	75	3	150	80	110	107	1.40	
14	FR15LA	194	48	87.9	94	4	200	80	110	126	1.80	
15	FR16LA	240	48	87.9	116	5	240	80	110	148	2.20	
16	FR17LA	147	48	87.9	74	3	150	80	110	106	1.40	
17	FR18LA	194	48	87.9	93	4	200	80	110	125	1.80	
18	FR19LA	240	48	87.9	114	5	240	80	110	146	2.20	
Cupboard / Credenza con top in metallo / Küchenbuffet												
19	FR20	100	48	150.9	79	2	120	80	170	105	1.70	
20	FR21	100	48	150.9	77	2	120	80	170	103	1.70	
Cupboard with top made of Laminam / Credenza con top in Laminam / Küchenbuffet mit Abdeckung in Laminam												
21	FR20LA	100	48	151.8	83	2	120	80	170	109	1.70	
22	FR21LA	100	48	151.8	81	2	120	80	170	107	1.70	



Metal essentials

	<p>01.18 Black (RAL 9005) Nero / Schwarz --- EM ▲ ■ MT</p>		<p>08.20 Rose quartz Rosa quarzo / Rosenquarz --- EM ▲</p>		<p>15.19 Forest green (RAL 6007) Verde bosco / Waldgrün --- EM ▲ ●</p>
	<p>02.18 Anthracite (RAL 7021) Antracite / Anthrazit --- EM ▲ ■ MT</p>		<p>09.18 Ruby red (RAL 3003) Rosso rubino / Rubinrot --- EM ▲</p>		<p>16.19 Turquoise blue (RAL 5018) Blu turchese / Türkisblau --- EM ▲</p>
	<p>03.18 Fantin grey Grigio Fantin / Fantin-Grau --- EM ▲ ■</p>		<p>10.21 Flame red (RAL 3000) Rosso fuoco / Feuerrot --- EM ▲ ●</p>		<p>17.18 Pastel blue (RAL 5024) Blu pastello / Pastellblau --- EM ▲ MT</p>
	<p>04.18 Light grey (RAL 7035) Grigio luce / Lichtgrau --- EM ▲ ■ MT</p>		<p>11.21 Melon yellow (RAL 1028) Giallo melone / Melonengelb --- EM ▲ ●</p>		<p>18.21 Dusty blue (RAL 5014) Azzurro polvere / Staubiges blau --- EM ▲ ●</p>
	<p>05.19 Cloud grey Grigio nuvola / Walkengrau --- EM ▲ ■</p>		<p>12.19 Zinc yellow (RAL 1018) Giallo zinco / Zinkgelb --- EM ▲</p>		<p>19.18 Gentian blue (RAL 5010) Blu genziana / Enzianblau --- EM ▲ ● MT</p>
	<p>06.18 White (RAL 9016) Bianco / Weiß --- EM ▲ ■ MT</p>		<p>13.21 Pastel green (RAL 6019) Verde pastello / Weißgrün --- EM ▲ ●</p>		<p>20.19 Steel blue (RAL 5011) Blu acciaio / Stahlblau --- EM ▲</p>
	<p>07.21 Milk white (RAL 9001) Bianco latte / Milchweiß --- EM ▲ ● ■ MT</p>		<p>14.18 Sage green (RAL 6021) Verde salvia / Salbeigrün --- EM ▲ ● MT</p>		<p>21.21 Coffee brown (RAL 8019) Marrone caffè / Kaffeebraun --- EM ▲</p>

Metal design

Metallic



41.18
Gold
Oro / Gold

EM ▲



43.21
Bronze
Bronzo / Bronze

EM



47.21
Platinum
Platino / Platin

EM ▲



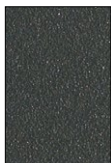
46.21
Titanium
Titanio / Titan

EM ▲



45.21
Silver
Argento / Silber

EM ▲



44.18
Iron
Ferro / Eisen

EM ▲



42.19
Rust
Ruggine / Rost

EM ▲●

Earth



51.18
Sand
Sabbia / Sand

EM ▲●



57.21
Clay
Creta / Lehm

EM ▲●



52.18
Moss
Muschio / Moos

EM ▲●



53.18
Basalt
Basalto / Basalt

EM ▲●



54.18
Stone
Pietra / Stein

EM ▲●



55.18
Amethyst
Ametista / Amethyst

EM ▲



56.21
Ocean
Oceano / Ozean

EM ▲

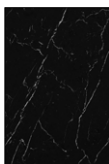
Surfaces / Superfici / Oberflächen

EM Embossed / Goffrato / Gaufriert
MT Matt / Opaco / Matt

Use / Utilizzo / Verwenden

- ▲ Tops / Top / Arbeitsplatte
- Outdoor / Esterni / Außenbereich
- Food / Alimentare / Lebensmittel

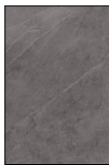
Laminam



L1.20
Nero Marquina

MT ▲●■

HG ▲●■



L2.20
Pietra Grey

MT ▲●■

HG ▲●■



L3.20
Statuarietto

MT ▲●■

HG ▲●■

Surfaces / Superfici / Oberflächen

MT Matt / Opaco / Matt

HG High Gloss / Lucido / Glänzend

Use / Utilizzo / Verwenden

▲ Tops / Top / Arbeitsplatte

● Outdoor / Esterni / Außenbereich

■ Food / Alimentare / Lebensmittel

Technical information

Metal Non-toxic powder coating for interior use, with no heavy metals. Cured in an oven at 190°C, following degreasing and phosphating. Guaranteed minimum thickness of 50 microns. Minimum resistance to salt spray of 200 hours (in accordance with the ASTM B117 standard). Some finishes are suitable for direct contact with food as required by Italian Law Decree D.M. 21/03/73 and subsequent updates. Requests for other RAL finishes can be considered.

Laminam Laminam compacts clays and feldspars into 12 mm (0.47") surfaces that offer exceptional technical performance. They combine unbeatable hygiene and durability with the visual appeal of natural, sophisticated tones that stretch out flawlessly and complement their surroundings.

Informazioni tecniche

Metallo Verniciatura per interni a polveri atossiche prive di metalli pesanti, con passaggio in forno a 190 °C, previo trattamento di sgrassaggio e fosfatazione. Spessore minimo garantito 50 micron, resistenza minima in nebbia salina pari a 200 ore (norma ASTM B117). Alcune finiture sono idonee al contatto diretto con alimenti come previsto dal decreto italiano D.M. 21/03/73 e successivi aggiornamenti. Altre finiture RAL valutabili su richiesta.

Laminam Dalle eccellenti performance tecniche, le superfici Laminam sono composte da argille e feldspati compattati in una superficie di 12 mm (0.47"). Le virtù estetiche garantiscono la continuità della materia con toni naturali e sofisticati, garantendo la massima igiene e resistenza.

Technische Informationen

Metall Die Pulverbeschichtung der gift- und schwermetallfreien Pulverlacke für Innenbereiche erfolgt im Lackierofen bei 190 °C nach vorheriger Entfettung und Phosphatierung. Die garantierte Mindeststärke der Lackschicht beträgt 50 Mikron bei einer Mindestprüfungsdauer von 200 Stunden im Salznebel (ASTM-Norm B117). Einige Oberflächen sind für den direkten Kontakt mit Lebensmitteln geeignet, wie in der Verordnung vorgesehen Italienisch D.M. 21/03/73 und folgende Aktualisierungen. Auf Anfrage können andere RAL-Finishes in Betracht gezogen werden.

Laminam Die Oberflächen Laminam mit hervorragenden technischen Leistungsmerkmalen bestehen aus Ton und Feldspat, die zu einer 12 mm (0.47") starken Arbeitsplatte kompaktiert wurden. Die ästhetischen Vorzüge gewährleisten die Kontinuität der Materie mit natürlichen und anspruchsvollen Farbtönen sowie höchste Hygiene und Widerstandskraft.

Sideboards and cupboards from the Frame range, with a visible support structure and inset doors that are distinguishing visual features of the minimal design scheme.

Welded single-piece frame made of 35 x 35 mm (1.38" x 1.38") square tubes. Concealed adjustable feet.

Top made of metal with a thickness of 3 mm (0.19") and a bottom fibreboard filler panel, or made of Laminam with a thickness of 12 mm (0.47").

Push-pull doors inset in the frame, made of bent and filled sheet metal. Door thickness: 20 mm (0.79"). Soft-close dampening hinges. Perforated version: holes with a diameter of 5 mm (0.20") at 10 mm (0.39") intervals.

Sides and bases inset in the frame, made of bent sheet metal; filled sides.

Metal backboards inset in the frame.

Shelves inside made of bent sheet metal.

The sideboards and cupboards with 3 doors are ready assembled. Sideboards with 4 or 5 doors are ready assembled but the doors come separately. The Laminam top is also delivered separately.

Madie e credenze del programma Frame, caratterizzato dal telaio portante in vista ed ante in luce, che diventano caratteristiche estetiche dal design minimale.

Telaio monoblocco saldato in tubolare quadrato 35 x 35 mm (1.38" x 1.38"). Piedini invisibili regolabili.

Top in metallo di spessore 3 mm (0.19") con tamponamento inferiore in fibre di legno o in Laminam di spessore 12 mm (0.47").

Ante push-pull in luce al telaio, in lamiera piegata e tamponata. Spessore delle ante 20 mm (0.79"). Cerniere ammortizzate. Nella versione con forature: fori diametro 5 mm (0.20") con passo 10 mm (0.39").

Fianchi e fondi in luce al telaio, in lamiera piegata; fianchi tamponati.

Schiene in metallo in luce al telaio.

Ripiani interni in lamiera piegata.

Credenza e madia a 3 ante vengono fornite montate. Madie a 4 o 5 ante vengono fornite montate ma con ante a parte. Il top in Laminam è sempre consegnato a parte.

Anrichten und Küchenbuffets aus der Frame-Linie mit sichtbarem Tragegestell und bündigen Türen, die zu den ästhetischen Eigenschaften eines Minimaldesigns werden.

Einteiligen, geschweißten Gestell aus Vierkantrohr 35 x 35 mm (1.38" x 1.38"). Unsichtbare, einstellbare Füße.

Abdeckung aus 3 mm (0.19") starkem Metall mit unterer Holzfaserdämmung oder aus 12 mm (0.47") starkem Laminam.

Push-Pull-Türen aus gedämmtem Falzblech, bündig mit dem Gestell. Stärke der Türen 20 mm (0.79"). Gedämpfte Scharniere. In der gelochten Ausführung: Bohrlöcher 5 mm (0.20") mit 10 mm Abstand.

Seiten und Basen aus Falzblech, bündig mit dem Gestell; gedämmten Seiten.

Rückwände aus Metall, bündig mit dem Gestell.

Innere Einlegeböden aus Falzblech.

Küchenbuffet und Anrichte werden montiert geliefert. Anrichten mit 4 oder 5 Türen sind bei der Lieferung montiert, aber die Türen sind separat. Die Laminamplatte wird auch separat geliefert.

Disclaimer / Esclusione di responsabilità / Haftungsausschluss

Fantin Srl reserves the right to change the dimensions and features of the products contained in this technical data sheet at any time and without prior notice. The finishes illustrated are purely indicative as the accuracy tolerances of printing processes should be taken into account.

Fantin Srl si riserva la facoltà di modificare in qualsiasi momento e senza preavviso le dimensioni e l'esecuzione dei prodotti contenuti nella presente scheda tecnica. Le finiture riportate hanno valore indicativo in quanto soggette alle tolleranze dei processi di stampa.

Fantin Srl behält sich das Recht vor, die angegebenen Maße und Ausführungen der Produkte, welche dieses Produktblatt enthält, jederzeit ohne Vorankündigung zu ändern. Aufgrund drucktechnischer Abweichungen dienen die dargestellten Ausführungen nur der Illustration.

Fantin Srl

via San Vito, 43
33080 - Bannia
di Fiume Veneto (PN)
Italia

t +39 0434 959 133
f +39 0434 560 037
fantin@fantin.com
www.fantin.com



UNI EN ISO 9001