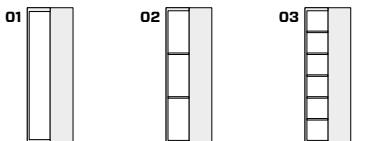


Just

Salvatore Indriolo, 2016

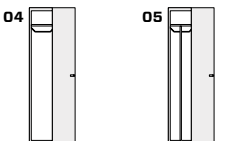


Just One Push Pull



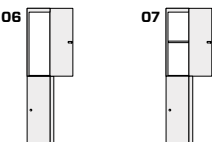
Internal compartment
Vano interno
Innenfach
34.6 x 33.1 x 170 cm
13.6" x 13" x 66.9"

Just One Key



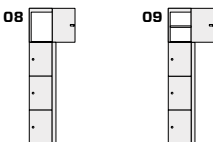
Internal compartment
Vano interno
Innenfach
34.6 x 33.1 x 170 cm
13.6" x 13" x 66.9"

Just Two



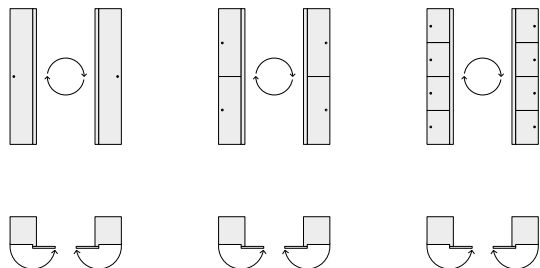
Internal compartment
Vano interno
Innenfach
34.6 x 33.1 x 84 cm
13.6" x 13" x 33.1"

Just Four



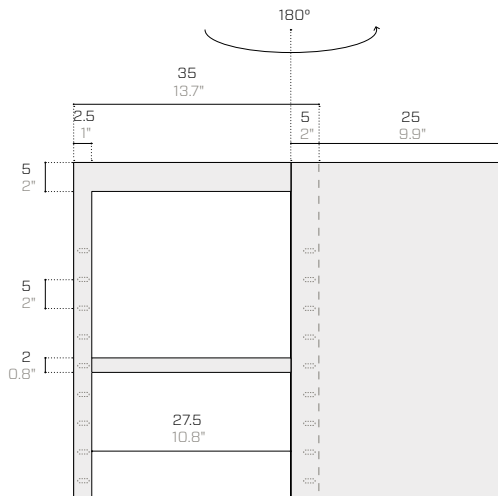
Internal compartment
Vano interno
Innenfach
34.6 x 33.1 x 39-43 cm
13.6" x 13" x 15.4"-16.9"

Reversible / Reversibilità / Umkehrbarkeit



The reversibility is a particular feature of all Just-models.
La reversibilità è prerogativa di tutti i modelli Just.
Die Umkehrbarkeit ist ein besonderes Merkmal aller Just-Modelle.

Internal compartment / Vano interno / Innenmaße des Innenfachs



Product / Prodotto / Produkt

Packaging / Imballo / Verpackung

No.	Code	Dimensions (w-d-h)	Weight	Compts.	Dimensions (w-d-h)	Weight	Vol pkg
N.	Codice	Dimensioni (l-p-h)	Peso	Vani	Dimensioni (l-p-h)	Peso	Vol. collo
Nr.	Code	Abmessungen (b-t-h)	Gewicht	Fächer	Abmessungen (b-t-h)	Gewicht	Vol. Kollo
		cm	kg		cm	kg	mc

Just One Push Pull

01	FJ0101	35 39 180	37	1	60 60 196	44	0.71
02	FJ0102	35 39 180	39	1	60 60 196	46	0.71
03	FJ0103	35 39 180	42	1	60 60 196	49	0.71

Just One Key

04	FJ0104	35 39 180	39	1	60 60 196	46	0.71
05	FJ0105	35 39 180	41	1	60 60 196	48	0.71

Just Two

06	FJ0206	35 39 180	38	2	60 60 196	45	0.71
07	FJ0207	35 39 180	40	2	60 60 196	47	0.71

Just Four

08	FJ0408	35 39 180	41	4	60 60 196	48	0.71
09	FJ0409	35 39 180	45	4	60 60 196	52	0.71

Coin lock / Serratura a moneta / Münzschloss

-	F193-MON	11 6 12.5	0.5	-	15 10 15	0.5	0.10
---	----------	-----------	-----	---	----------	-----	------

Joining kit / Kit affiancamento / Verbindungsset

-	FJ01AF	- - -	-	-	- - -	-	-
---	--------	-------	---	---	-------	---	---

Additional shelf / Ripiano aggiuntivo / Zusätzlicher Einlegeboden

-	FJ01RIP19	34.6 33.1 2	1	-	- - -	-	-
---	-----------	-------------	---	---	-------	---	---

Additional shelf with coat hanger rail / Ripiano aggiuntivo con portagruccia / Zusätzlicher Einlegeboden mit Bügelhalter

-	FJ01RIP19G	34.6 33.1 5	1.5	-	- - -	-	-
---	------------	-------------	-----	---	-------	---	---

Vertical divider / Separatore verticale / Vertikale Trennwand

-	FJ01IN140	2 33 145	3.2	-	- - -	-	-
---	-----------	----------	-----	---	-------	---	---

LED lighting (only for 01, 02, 03, 04, 05) / Illuminazione a LED (solo per 01, 02, 03, 04, 05) / LED-Beleuchtung (nur für 01, 02, 03, 04, 05)

-	FJ01LED	- - -	-	-	- - -	-	-
---	---------	-------	---	---	-------	---	---

The packaging details are for assembled products / I dati di imballo si riferiscono al prodotto montato / Die Verpackungsdaten beziehen sich auf das montierte Produkt

Metal essentials

	<p>01.18 Black (RAL 9005) Nero / Schwarz --- EM ▲ ■ MT</p>		<p>08.20 Rose quartz Rosa quarzo / Rosenquarz --- EM ▲</p>		<p>15.19 Forest green (RAL 6007) Verde bosco / Waldgrün --- EM ▲ ●</p>
	<p>02.18 Anthracite (RAL 7021) Antracite / Anthrazit --- EM ▲ ■ MT</p>		<p>09.18 Ruby red (RAL 3003) Rosso rubino / Rubinrot --- EM ▲</p>		<p>16.19 Turquoise blue (RAL 5018) Blu turchese / Türkisblau --- EM ▲</p>
	<p>03.18 Fantin grey Grigio Fantin / Fantin-Grau --- EM ▲ ■</p>		<p>10.21 Flame red (RAL 3000) Rosso fuoco / Feuerrot --- EM ▲ ●</p>		<p>17.18 Pastel blue (RAL 5024) Blu pastello / Pastellblau --- EM ▲ MT</p>
	<p>04.18 Light grey (RAL 7035) Grigio luce / Lichtgrau --- EM ▲ ■ MT</p>		<p>11.21 Melon yellow (RAL 1028) Giallo melone / Melonengelb --- EM ▲ ●</p>		<p>18.21 Dusty blue (RAL 5014) Azzurro polvere / Staubiges blau --- EM ▲ ●</p>
	<p>05.19 Cloud grey Grigio nuvola / Walkengrau --- EM ▲ ■</p>		<p>12.19 Zinc yellow (RAL 1018) Giallo zinco / Zinkgelb --- EM ▲</p>		<p>19.18 Gentian blue (RAL 5010) Blu genziana / Enzianblau --- EM ▲ ● MT</p>
	<p>06.18 White (RAL 9016) Bianco / Weiß --- EM ▲ ■ MT</p>		<p>13.21 Pastel green (RAL 6019) Verde pastello / Weißgrün --- EM ▲ ●</p>		<p>20.19 Steel blue (RAL 5011) Blu acciaio / Stahlblau --- EM ▲</p>
	<p>07.21 Milk white (RAL 9001) Bianco latte / Milchweiß --- EM ▲ ● ■ MT</p>		<p>14.18 Sage green (RAL 6021) Verde salvia / Salbeigrün --- EM ▲ ● MT</p>		<p>21.21 Coffee brown (RAL 8019) Marrone caffè / Kaffeebraun --- EM ▲</p>

Metal design

Metallic



41.18
Gold
Oro / Gold

EM ▲



43.21
Bronze
Bronzo / Bronze

EM



47.21
Platinum
Platino / Platin

EM ▲



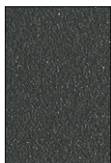
46.21
Titanium
Titanio / Titan

EM ▲



45.21
Silver
Argento / Silber

EM ▲



44.18
Iron
Ferro / Eisen

EM ▲



42.19
Rust
Ruggine / Rost

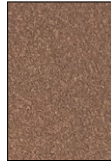
EM ▲●

Earth



51.18
Sand
Sabbia / Sand

EM ▲●



57.21
Clay
Creta / Lehm

EM ▲●



52.18
Moss
Muschio / Moos

EM ▲●



53.18
Basalt
Basalto / Basalt

EM ▲●



54.18
Stone
Pietra / Stein

EM ▲●



55.18
Amethyst
Ametista / Amethyst

EM ▲



56.21
Ocean
Oceano / Ozean

EM ▲

Surfaces / Superfici / Oberflächen

EM Embossed / Goffrato / Gaufriert
MT Matt / Opaco / Matt

Use / Utilizzo / Verwenden

- ▲ Tops / Top / Arbeitsplatte
- Outdoor / Esterni / Außenbereich
- Food / Alimentare / Lebensmittel

Technical information

Metal Non-toxic powder coating for interior use, with no heavy metals. Cured in an oven at 190°C, following degreasing and phosphating. Guaranteed minimum thickness of 50 microns. Minimum resistance to salt spray of 200 hours (in accordance with the ASTM B117 standard). Some finishes are suitable for direct contact with food as required by Italian Law Decree D.M. 21/03/73 and subsequent updates. Requests for other RAL finishes can be considered.

Informazioni tecniche

Metallo Verniciatura per interni a polveri atossiche prive di metalli pesanti, con passaggio in forno a 190 °C, previo trattamento di sgrassaggio e fosfatazione. Spessore minimo garantito 50 micron, resistenza minima in nebbia salina pari a 200 ore (norma ASTM B117). Alcune finiture sono idonee al contatto diretto con alimenti come previsto dal decreto italiano D.M. 21/03/73 e successivi aggiornamenti. Altre finiture RAL valutabili su richiesta.

Technische Informationen

Metall Die Pulverbeschichtung der gift- und schwermetalldfreien Pulverlacke für Innenbereiche erfolgt im Lackierofen bei 190 °C nach vorheriger Entfettung und Phosphatierung. Die garantierte Mindeststärke der Lackschicht beträgt 50 Mikron bei einer Mindestprüfungsdauer von 200 Stunden im Salznebel (ASTM-Norm B117). Einige Oberflächen sind für den direkten Kontakt mit Lebensmitteln geeignet, wie in der Verordnung vorgesehen Italienisch D.M. 21/03/73 und folgende Aktualisierungen. Auf Anfrage können andere RAL-Finishes in Betracht gezogen werden.

Durable, discreet and suitable for all public and private purposes. They can be flipped 180°, so it is possible to choose whether to open the door on the right or the left.

One-piece body made of sheet metal with thicknesses of 0.7 mm and 1 mm (0.03" and 0.04").

Shelves made of 0.7 mm (0.03") thick sheet metal. Adjustable heights at intervals of 50 mm (1.97").

Hollow-core metal doors with concealed metal hinges and 180° opening.

Key lock for all models.
For Just One, push-pull opening also.

Ventilation ensured by a full height invisible air channel.

Adjustable plastic feet for raising the product from the ground.

Optional accessories: LED lighting running all of the way up the internal compartment (only for 01, 02, 03, 04, 05).

[This product is ready assembled.](#)

Solido e discreto, adatto a tutte le esigenze sia nel pubblico che nel privato. Ribaltandolo di 180° permette la scelta di aprire la porta sia da destra che da sinistra.

Scocca monoblocco in lamiera di spessori 0.7 e 1 mm (0.03" e 0.04").

Ripiani in lamiera di spessore 0.7 mm (0.03") regolabili in altezza con passo 50 mm (1.97").

Ante tamburate con cerniere metalliche a scomparsa e con apertura di 180°.

Serrature a chiave per tutti i modelli.
Per Just One anche apertura Push Pull.

Areazione garantita da un canale d'aria invisibile a tutta altezza.

Piedini in plastica regolabili per elevazione dal suolo.

Accessori opzionali: illuminazione a LED su tutta l'altezza del vano interno (solo per 01, 02, 03, 04, 05).

[Il prodotto viene fornito montato.](#)

Solide und diskret ist dieses Produkt geeignet für alle Bedürfnisse sowohl im öffentlichen als auch im privaten Bereich. Kippt man ihn um 180° hat man die Wahl, die Tür sowohl von rechts als auch von links zu öffnen.

Monoblock-Korpus aus 0.7 und 1 mm (0.03" und 0.04") starkem Blech.

Einlegeböden aus 0.7 mm (0.03") starkem Blech mit Einlegeböden, die in einem Abstand von 50 mm (1.97") höhenverstellbar sind.

Glatte Türen mit verdeckten Metallscharnieren und 180°-Öffnung.

Schlöss mit Schlüssel. Für Just One, ebenfalls Push-Pull Öffnung.

Belüftung durch einen volle Höhe sichtbaren Luftkanal sichergestellt.

Höhenverstellbare Kunststofffüße für den Abstand zum Fußboden.

Optionales Zubehör: LED-Beleuchtung über die gesamte Höhe des Innenraums (nur für 01, 02, 03, 04, 05).

[Das Produkt wird montiert geliefert.](#)

Disclaimer / Esclusione di responsabilità / Haftungsausschluss

Fantin Srl reserves the right to change the dimensions and features of the products contained in this technical data sheet at any time and without prior notice. The finishes illustrated are purely indicative as the accuracy tolerances of printing processes should be taken into account.

Fantin Srl si riserva la facoltà di modificare in qualsiasi momento e senza preavviso le dimensioni e l'esecuzione dei prodotti contenuti nella presente scheda tecnica. Le finiture riportate hanno valore indicativo in quanto soggette alle tolleranze dei processi di stampa.

Fantin Srl behält sich das Recht vor, die angegebenen Maße und Ausführungen der Produkte, welche dieses Produktblatt enthält, jederzeit ohne Vorankündigung zu ändern. Aufgrund drucktechnischer Abweichungen dienen die dargestellten Ausführungen nur der Illustration.

Fantin Srl

via San Vito, 43
33080 - Bannia
di Fiume Veneto (PN)
Italia

t +39 0434 959 133
f +39 0434 560 037
fantin@fantin.com
www.fantin.com



UNI EN ISO 9001