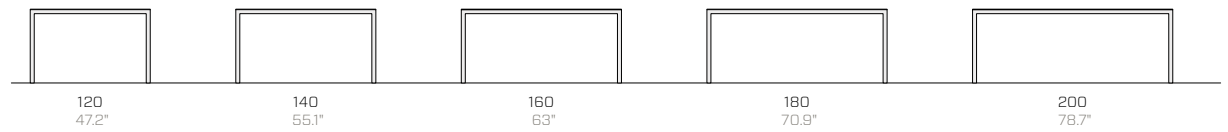
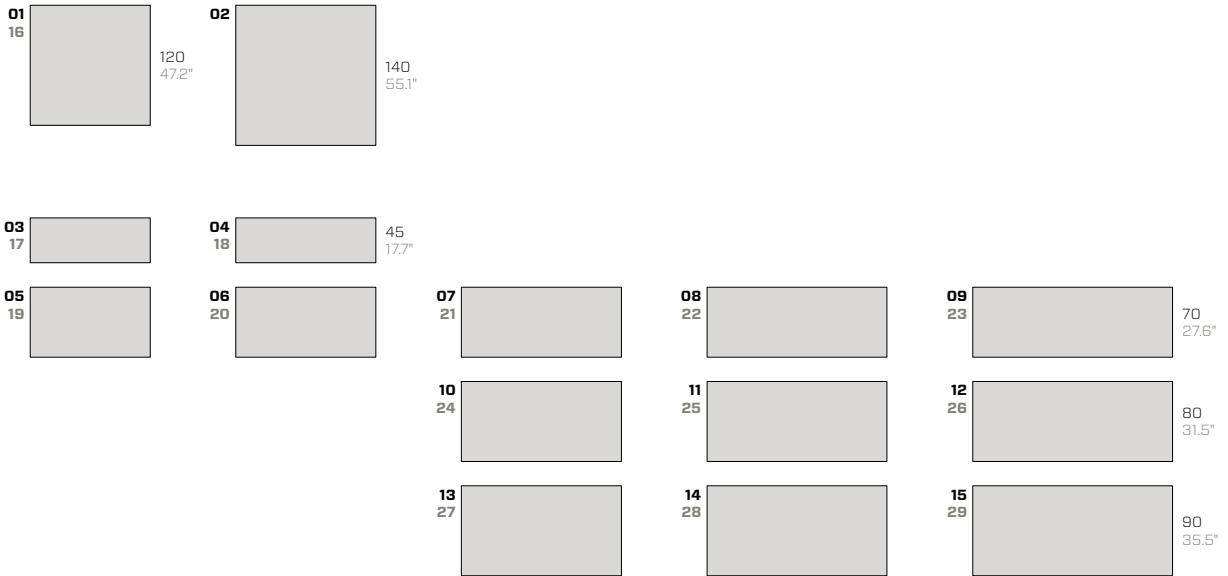


# Frame

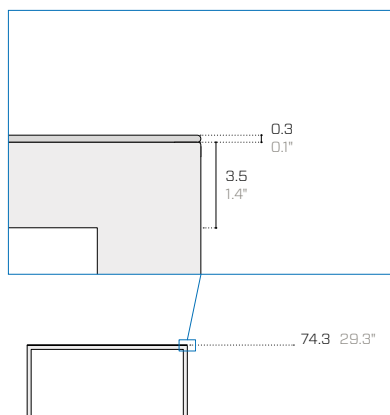
## Tables & desks

Salvatore Indriolo, 2018

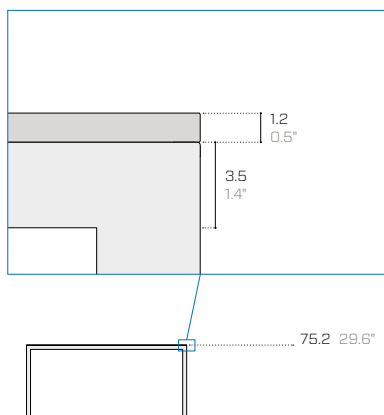




**Top thickness / Spessore dei piani / Plattenstärke**



With metal top  
 Con piano in metallo  
 Mit Abdeckung aus Metall



With Fenix top  
 Con piano in Fenix  
 Mit Abdeckung aus Fenix

Product / Prodotto / Produkt					Packaging / Imballo / Verpackung					
No.	Code	Dimensions (w-d-h)			Weight	Dimensions (w-d-h)			Weight	Vol pkg
N.	Codice	Dimensioni (l-p-h)			Peso	Dimensioni (l-p-h)			Peso	Vol. collo
Nr.	Code	Abmessungen (b-t-h)			Gewicht	Abmessungen (b-t-h)			Gewicht	Vol. Kollo
					cm	kg	cm	kg	mc	
<b>With metal top / Con piano in metallo / Mit Arbeitsplatte aus Metall</b>										
01	FR32	120	120	74.3	44	150	150	20	82	0.45
02	FR34	140	140	74.3	55	150	150	20	93	0.45
03	FR31	120	45	74.3	19	150	80	20	51	0.24
04	FR33	140	45	74.3	21	150	80	20	53	0.24
05	FR44	120	70	74.3	31	150	80	20	63	0.24
06	FR45	140	70	74.3	32	150	80	20	64	0.24
07	FR35	160	70	74.3	35	200	80	20	73	0.32
08	FR36	180	70	74.3	38	200	80	20	76	0.32
09	FR37	200	70	74.3	42	200	80	20	80	0.32
10	FR38	160	80	74.3	38	200	80	20	76	0.32
11	FR39	180	80	74.3	42	200	80	20	80	0.32
12	FR40	200	80	74.3	45	200	80	20	83	0.32
13	FR41	160	90	74.3	41	200	120	20	83	0.48
14	FR42	180	90	74.3	45	200	120	20	87	0.48
15	FR43	200	90	74.3	49	200	120	20	91	0.48
<b>With Fenix top / Con piano in Fenix / Mit Arbeitsplatte aus Fenix</b>										
16	FR32FN	120	120	75.2	45	150	50	20	83	0.45
17	FR31FN	120	45	75.2	19	150	80	20	51	0.24
18	FR33FN	140	45	75.2	21	150	80	20	53	0.24
19	FR44FN	120	70	75.2	31	150	80	20	63	0.24
20	FR45FN	140	70	75.2	32	150	80	20	64	0.24
21	FR35FN	160	70	75.2	35	200	80	20	73	0.32
22	FR36FN	180	70	75.2	38	200	80	20	76	0.32
23	FR37FN	200	70	75.2	43	200	80	20	81	0.32
24	FR38FN	160	80	75.2	38	200	80	20	76	0.32
25	FR39FN	180	80	75.2	42	200	80	20	80	0.32
26	FR40FN	200	80	75.2	46	200	80	20	84	0.32
27	FR41FN	160	90	75.2	41	200	120	20	83	0.48
28	FR42FN	180	90	75.2	45	200	120	20	87	0.48
29	FR43FN	200	90	75.2	50	200	120	20	92	0.48

The packaging details are for products that require assembly / I dati di imballo si riferiscono al prodotto smontato / Die Verpackungsdaten beziehen sich auf das unmontierte Produkt

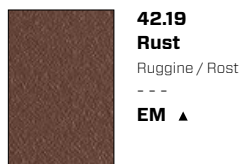
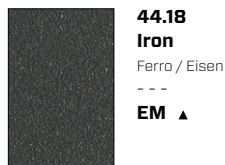
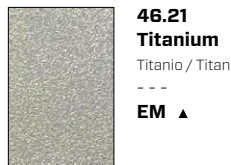
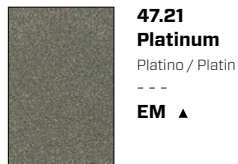
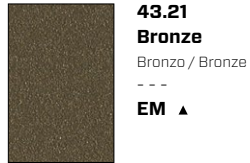


## Metal essentials

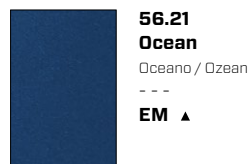
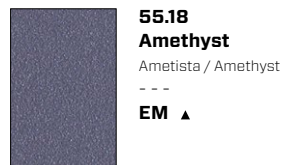
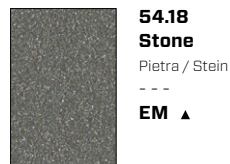
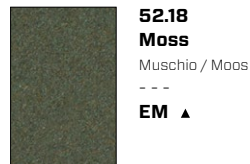
	<p><b>01.18</b> <b>Black (RAL 9005)</b> Nero / Schwarz --- EM ▲ ■</p>		<p><b>08.20</b> <b>Rose quartz</b> Rosa quarzo / Rosenquarz --- EM ▲</p>		<p><b>15.19</b> <b>Forest green (RAL 6007)</b> Verde bosco / Waldgrün --- EM ▲</p>
	<p><b>02.18</b> <b>Anthracite (RAL 7021)</b> Antracite / Anthrazit --- EM ▲ ■</p>		<p><b>09.18</b> <b>Ruby red (RAL 3003)</b> Rosso rubino / Rubinrot --- EM ▲</p>		<p><b>16.19</b> <b>Turquoise blue (RAL 5018)</b> Blu turchese / Türkisblau --- EM ▲</p>
	<p><b>03.18</b> <b>Fantin grey</b> Grigio Fantin / Fantin-Grau --- EM ▲ ■</p>		<p><b>10.21</b> <b>Flame red (RAL 3000)</b> Rosso fuoco / Feuerrot --- EM ▲</p>		<p><b>17.18</b> <b>Pastel blue (RAL 5024)</b> Blu pastello / Pastellblau --- EM ▲</p>
	<p><b>04.18</b> <b>Light grey (RAL 7035)</b> Grigio luce / Lichtgrau --- EM ▲ ■</p>		<p><b>11.21</b> <b>Melon yellow (RAL 1028)</b> Giallo melone / Melonengelb --- EM ▲</p>		<p><b>18.21</b> <b>Dusty blue (RAL 5014)</b> Azzurro polvere / Staubiges blau --- EM ▲</p>
	<p><b>05.19</b> <b>Cloud grey</b> Grigio nuvola / Walkengrau --- EM ▲ ■</p>		<p><b>12.19</b> <b>Zinc yellow (RAL 1018)</b> Giallo zinco / Zinkgelb --- EM ▲</p>		<p><b>19.18</b> <b>Gentian blue (RAL 5010)</b> Blu genziana / Enzianblau --- EM ▲</p>
	<p><b>06.18</b> <b>White (RAL 9016)</b> Bianco / Weiß --- EM ▲ ■</p>		<p><b>13.21</b> <b>Pastel green (RAL 6019)</b> Verde pastello / Weißgrün --- EM ▲</p>		<p><b>20.19</b> <b>Steel blue (RAL 5011)</b> Blu acciaio / Stahlblau --- EM ▲</p>
	<p><b>07.21</b> <b>Milk white (RAL 9001)</b> Bianco latte / Milchweiß --- EM ▲ ■</p>		<p><b>14.18</b> <b>Sage green (RAL 6021)</b> Verde salvia / Salbeigrün --- EM ▲</p>		<p><b>21.21</b> <b>Coffee brown (RAL 8019)</b> Marrone caffè / Kaffeebraun --- EM ▲</p>

Metal design

Metallic



Earth



Surfaces / Superfici / Oberflächen

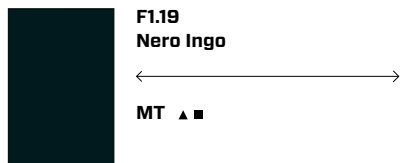
**EM** Embossed / Goffrato / Gaufriert

Use / Utilizzo / Verwenden

- ▲ Tops / Top / Arbeitsplatte
- Food / Alimentare / Lebensmittel

Fenix NTM™

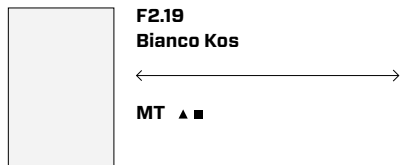
Best match available  
Abbinamento suggerito  
Paarungsvorschlag



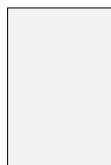
**F1.19**  
**Nero Ingo**  
---  
MT ▲ ■



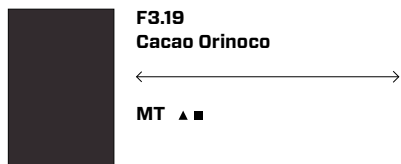
**01.18**  
**Black (RAL 9005)**  
Nero / Schwarz  
---  
EM ▲ ■



**F2.19**  
**Bianco Kos**  
---  
MT ▲ ■



**06.18**  
**White (RAL 9016)**  
Bianco / Weiß  
---  
EM ▲ ■



**F3.19**  
**Cacao Orinoco**  
---  
MT ▲ ■



**21.21**  
**Coffee brown (RAL 8019)**  
Marrone caffè / Kaffeebraun  
---  
EM ▲



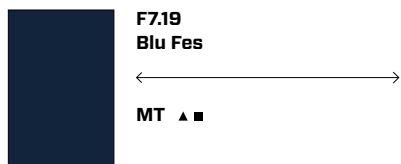
**F4.19**  
**Grigio Londra**  
---  
MT ▲ ■



**F5.19**  
**Beige Arizona**  
---  
MT ▲ ■



**F6.19**  
**Grigio Bromo**  
---  
MT ▲ ■



**F7.19**  
**Blu Fes**  
---  
MT ▲ ■



**20.19**  
**Steel blue (RAL 5011)**  
Blu acciaio / Stahlblau  
---  
EM ▲

The tops in Fenix NTM™ can be matched with all Fantin finishes. The correspondences in this page represent the best match available and are not intended as perfect colour equivalences.

I top in Fenix NTM™ sono abbinabili a tutte le finiture Fantin. Le corrispondenze di questa pagina sono indicative e non si intendono come perfette equivalenze di colore.

Die Platten in Fenix NTM™ können mit allen Fantin-Oberflächen abgestimmt werden. Die Entsprechungen auf dieser Seite stellen die beste verfügbare Übereinstimmung dar und sind nicht als perfekte Farbäquivalenzen gedacht.

**Surfaces / Superfici / Oberflächen**

**EM** Embossed / Goffrato / Gaufriert  
**MT** Matt / Opaco / Matt

**Use / Utilizzo / Verwenden**

- ▲ Tops / Top / Arbeitsplatte
- Food / Alimentare / Lebensmittel

### Technical information

**Metal** Non-toxic powder coating for interior use, with no heavy metals. Cured in an oven at 190°C, following degreasing and phosphating. Guaranteed minimum thickness of 50 microns. Minimum resistance to salt spray of 200 hours (in accordance with the ASTM B117 standard). Some finishes are suitable for direct contact with food as required by Italian Law Decree D.M. 21/03/73 and subsequent updates. Requests for other RAL finishes can be considered.

**Fenix** Top and stove tops in 12 mm (0.47") Fenix NTM™ thermolaminate. Super matt, smudgeproof and restorable, gives the surface a warm aesthetic and is soft to the touch. Fenix NTM™ finishes are paired with the Fantin Ultra-matt (Metal Design) collection in the price list, in order to create monochrome products.

### Informazioni tecniche

**Metallo** Verniciatura per interni a polveri atossiche prive di metalli pesanti, con passaggio in forno a 190 °C, previo trattamento di sgrassaggio e fosfatazione. Spessore minimo garantito 50 micron, resistenza minima in nebbia salina pari a 200 ore (norma ASTM B117). Alcune finiture sono idonee al contatto diretto con alimenti come previsto dal decreto italiano D.M. 21/03/73 e successivi aggiornamenti. Altre finiture RAL valutabili su richiesta.

**Fenix** Top e piani cucina in termolaminato Fenix NTM™ di spessore 12 mm (0.47"). Super opaco, antimpronta e ripristinabile, dona alla superficie un'estetica calda e morbida al tatto. Le finiture Fenix NTM™ a listino sono corrispondenti alla collezione Fantin Ultra-matt (Metal Design), al fine di creare prodotti monocromatici.

### Technische Informationen

**Metall** Die Pulverbeschichtung der gift- und schwermetallfreien Pulverlacke für Innenbereiche erfolgt im Lackierofen bei 190 °C nach vorheriger Entfettung und Phosphatierung. Die garantierte Mindeststärke der Lackschicht beträgt 50 Mikron bei einer Mindestprüfungsdauer von 200 Stunden im Salznebel (ASTM-Norm B117). Einige Oberflächen sind für den direkten Kontakt mit Lebensmitteln geeignet, wie in der Verordnung vorgesehen Italienisch D.M. 21/03/73 und folgende Aktualisierungen. Auf Anfrage können andere RAL-Finishes in Betracht gezogen werden.

**Fenix** Abdeckung und Küchenarbeitsplatten aus Thermolaminat Fenix NTM™ in der Stärke 12 mm (0.47"). Die superopake Oberfläche mit Anti-Fingerprint-Schutz ist wiederherstellbar, hat eine warme Optik und eine weiche Haptik. Die Finishs Fenix NTM™ der Liste entsprechen denen der Kollektion Fantin Ultra-matt (Metal Design), sodass unifarbene Produkte entstehen.

**Tables and desks from the Frame range, with square tube support structures and extremely thin tops that are distinguishing visual features of the minimal design scheme.**

**Frame** made of 35 x 35 mm (1.38" x 1.38") square tubes. Concealed adjustable feet.

**Top** made of metal with a thickness of 3 mm (0.12") and a bottom fibreboard filler panel or made of Fenix with a thickness of 12 mm (0.47").

This product requires assembly (assembled products are only provided on request). Only desks 03, 04, 17 and 18 are ready assembled (with welded single-piece frames).

**Tavoli e scrittoi del programma Frame, caratterizzato dal telaio portante in tubo quadro e il piano sottilissimo, che diventano caratteristiche estetiche dal design minimale.**

**Telaio** in tubolare quadrato 35 x 35 mm (1.38" x 1.38"). Piedini invisibili regolabili.

**Top** in metallo di spessore 3 mm (0.12") con tamponamento inferiore in fibre di legno o in Fenix di spessore 12 mm (0.47").

Il prodotto viene fornito smontato (montato solo su richiesta) ad eccezione degli scrittoi 03, 04, 17 e 18 che vengono forniti montati (telai monoblocco saldati).

**Tische und Schreibtische der Frame-Linie mit Tragegestell aus Vierkantrrohr und sehr dünner Platte, die zu den ästhetischen Eigenschaften eines Minimaldesigns werden.**

**Gestell** aus Vierkantrrohr 35 x 35 mm (1.38" x 1.38"). Unsichtbare, einstellbare Füße.

**Abdeckung** aus 3 mm (0.12") starkem Metall mit unterer Holzfaserdämmung oder aus 12 mm (0.47") starkem Fenix.

Das Produkt wird unmontiert geliefert (montiert nur auf Anfrage) mit Ausnahme der Schreibtische 03, 04, 17 und 18, die montiert geliefert werden (geschweißte einteilige Gestelle).

#### Disclaimer / Esclusione di responsabilità / Haftungsausschluss

Fantin Srl reserves the right to change the dimensions and features of the products contained in this technical data sheet at any time and without prior notice. The finishes illustrated are purely indicative as the accuracy tolerances of printing processes should be taken into account.

Fantin Srl si riserva la facoltà di modificare in qualsiasi momento e senza preavviso le dimensioni e l'esecuzione dei prodotti contenuti nella presente scheda tecnica. Le finiture riportate hanno valore indicativo in quanto soggette alle tolleranze dei processi di stampa.

Fantin Srl behält sich das Recht vor, die angegebenen Maße und Ausführungen der Produkte, welche dieses Produktblatt enthält, jederzeit ohne Vorankündigung zu ändern. Aufgrund drucktechnischer Abweichungen dienen die dargestellten Ausführungen nur der Illustration.

#### Fantin Srl

via San Vito, 43  
33080 - Bannia  
di Fiume Veneto (PN)  
Italia

t +39 0434 959 133  
f +39 0434 560 037  
fantin@fantin.com  
www.fantin.com



UNI EN ISO 9001